

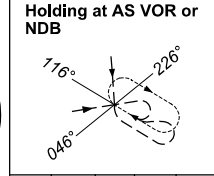
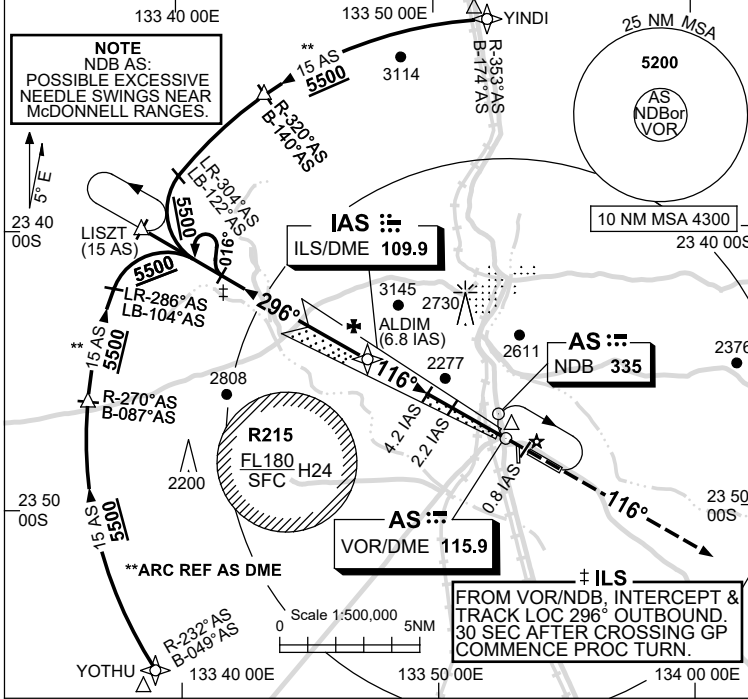
USE QNH

ILS-Z or LOC-Z RWY 12
ALICE SPRINGS, NT (YBAS)

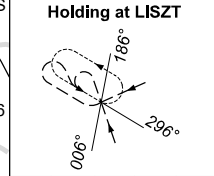
13 JUN 2024

ATIS 123.0 115.9 335	AWIS 134.05	TWR 118.3	FIA (AH) ML CEN 119.8	CTAF+AFRU (AH) 118.3
-------------------------	----------------	--------------	--------------------------	-------------------------

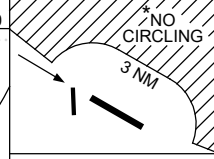
NAVAID RQ:
 • DME or GNSS (ILS)
 • DME (LOC ONLY)



TR	IN	TURN	TIME	MIN ALT	DME LMT
296°	Right	1	5500		

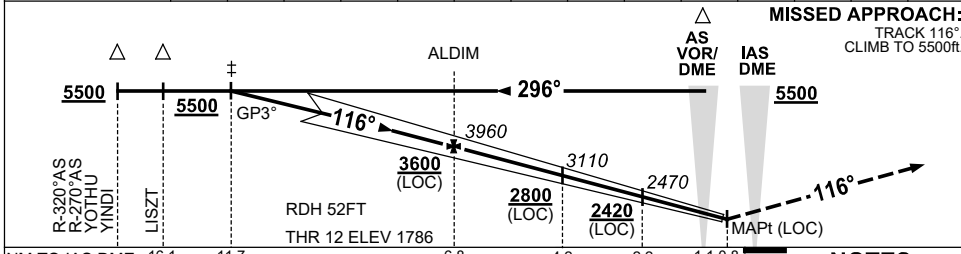


TR	IN	TURN	TIME	MIN ALT	DME LMT
116°	Left	1	5500		



AD ELEV 1789
 Bearings are Magnetic
 Elevations in FEET AMSL

NM TO IAS DME	11.7	11	10	9	8	6.8	6	5	4.2	4	3	2.2	2	1.7
ALT (3° APCH PATH)	5500	5290	4970	4650	4330	3960	3690	3380	3110	3060	2740	2470	2420	2320



NM TO IAS DME	16.1	11.7	6.8	4.2	2.2	1.1	0.8
NM TO THR 12	16	11.5	6.7	4	2	1	0.6

- NOTES**
- MAX IAS: 185KTS. HOLDING: 185KTS. HLDG NOT ABOVE FL120.
 - SPECIAL ALTN MNM 800/4.0KM.
 - NO CIRCLING N OF RWY 12/30 BEYOND 3NM.
 - CTA CONTAINMENT NOT ASSURED WHEN HOLDING AT LISZT AT OR BLW 6500FT.

CATEGORY	A	B	C	D
S-I ILS		2100 (314) 0.8		
S-I LOC		2320 (531-2.1)		
CIRCLING*	2570 (781-2.4)		2990 (1201-4.0)	2990 (1201-5.0)
ALTERNATE*	(1281-4.4)		(1701-6.0)	(1701-7.0)

Changes: NOTE 4.

BASII02-179