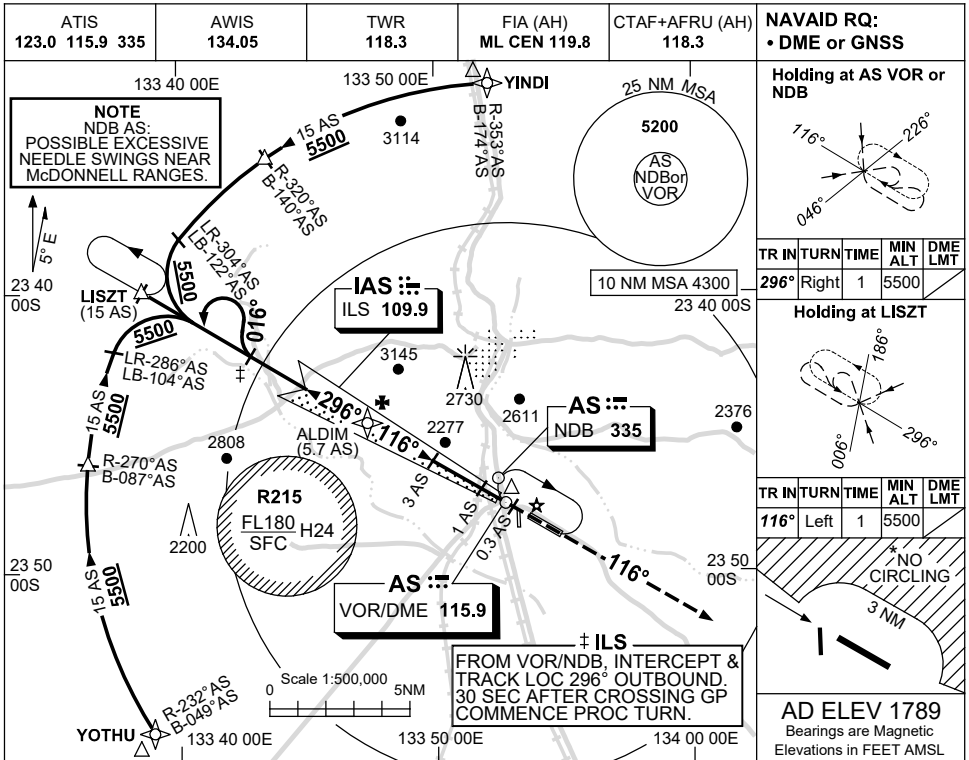


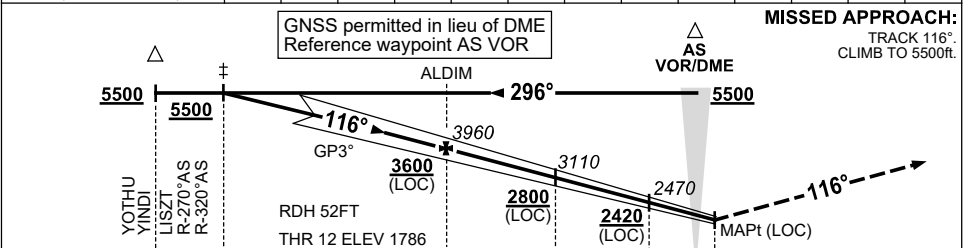
USE QNH

ILS-Y or LOC-Y RWY 12
ALICE SPRINGS, NT (YBAS)

13 JUN 2024



NM TO AS DME	10.5	10	9	8	7	6	5.7	5	4	3	2	1	0.5
ALT (3° APCH PATH)	5500	5330	5010	4690	4370	4060	3960	3740	3420	3110	2780	2470	2320



NM TO AS DME	15	10.5	5.7	3	1	0.3
NM TO THR 12	11.5	6.7	4	2	1.0	0

CATEGORY	A	B	C	D
S-I ILS		2100 (314) 0.8		
S-I LOC		2320 (531-2.1)		
CIRCLING*	2570 (781-2.4)	2990 (1201-4.0)	2990 (1201-5.0)	
ALTERNATE*	(1281-4.4)	(1701-6.0)	(1701-7.0)	

Changes: NOTE 4. BASII01-179