

USE QNH

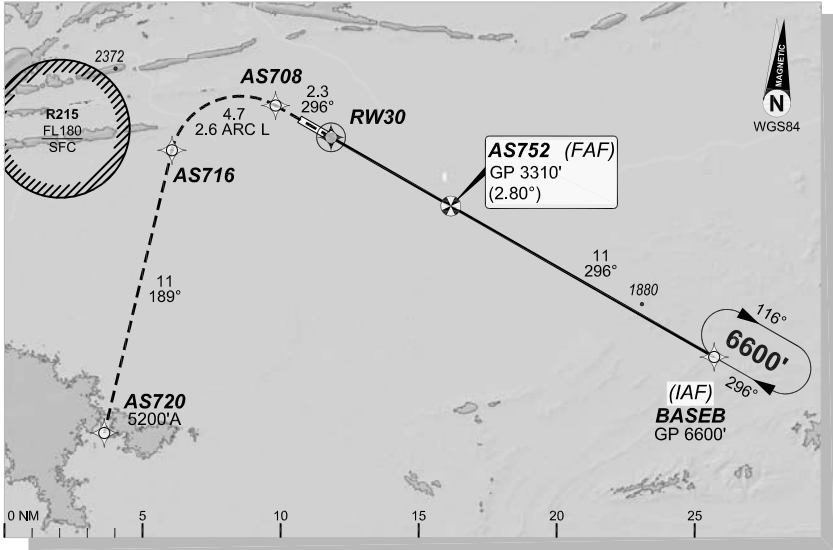
RNP U RWY 30 (AR)

1 DEC 2022

ALICE SPRINGS, NT (YBAS)

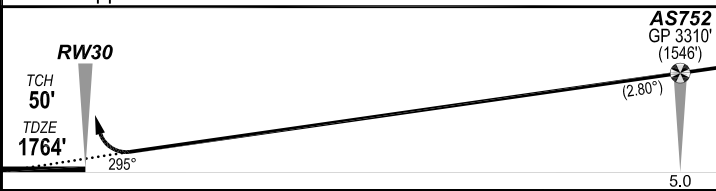
GE PROPRIETARY INFORMATION

ATIS 123.0 115.9 335			AWIS 134.05		TWR 118.3	FIA (AH) ML CEN 119.8	CTAF + AFRU (AH) 118.3
RNP AR RNV U 30		Apt Elev. 1789' TDZE 1764'		AS752 (FAF) GP 3310' (2.80°)		Trans Level FL110	



MISSED APPROACH:

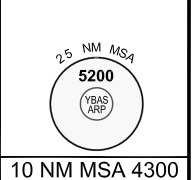
Climb to **5200'** via the RNP AR
Missed Approach track to **AS720**.



NOTES:

- YBAS ACT QNH RQ.
- Minimum MAP gradient (All Engines) 3.0% to 5200FT.
- APCH Path does not coincide with PAPI glide path 3°.

				RNP 0.30	
				DA(H) 2067' (303')	
C	C	C	C	1600 m	



FOR CASA APPROVED OPERATORS ONLY

202208021126COPYRIGHT. 2022 NAVERUS, INC. USA

Changes: PROC NAME, RNAV (RNP) TO RNP AR.

DO NOT USE FOR NAVIGATION

Prepared by GE Aviation

BASGN08-173

