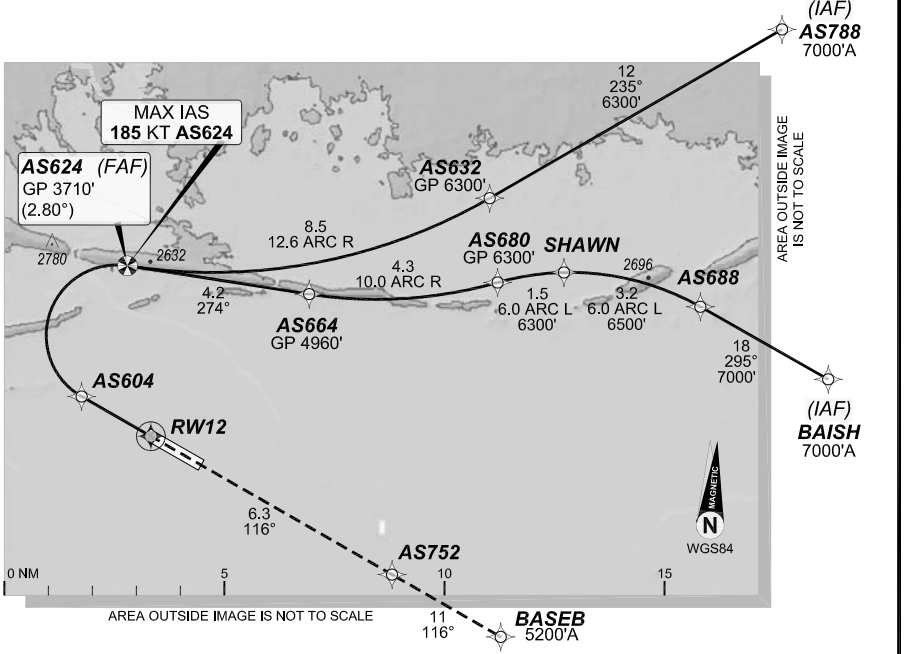


1 DEC 2022

ALICE SPRINGS, NT (YBAS)

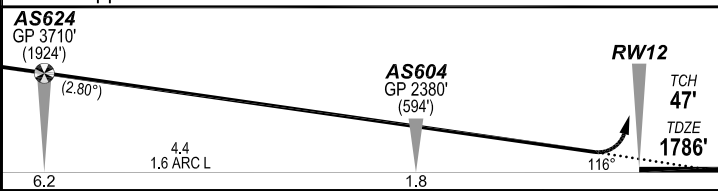
GE PROPRIETARY INFORMATION

ATIS <b>123.0 115.9 335</b>			AWIS <b>134.05</b>		TWR <b>118.3</b>	FIA (AH) <b>ML CEN 119.8</b>	CTAF + AFRU (AH) <b>118.3</b>
RNP AR <b>RNV M 12</b>		Apt Elev. <b>1789'</b> TDZE <b>1786'</b>	AS624 (FAF) <b>GP 3710' (2.80°)</b>		Trans Level <b>FL110</b>		



**MISSED APPROACH:**

Climb to **5200'** via the RNP AR  
Missed Approach track to **BASEB**.



**NOTES:**

- YBAS ACT QNH RQ.
- Minimum MAP gradient (All Engines) 3.0% to 5200FT.
- APCH Path does not coincide with PAPI glide path 3°.

AS624 GP 3710' (1924') (2.80°)		AS604 GP 2380' (594')		RWY 12 TCH 47' TDZE 1786'	
6.2		4.4 1.6 ARC L		1.8	
				RNP 0.30	
				DA(H) 2104' (318')	
				HIALS OUT	
C		C		C	800 m 1700 m



10 NM MSA 4300

**FOR CASA APPROVED OPERATORS ONLY**

Changes: PROC NAME, SPEED NOTE AS624, RNAV (RNP) TO RNP AR.

**DO NOT USE FOR NAVIGATION**

Prepared by GE Aviation

BASGN03-173

202208021123COPYRIGHT 2022 NAVERUS, INC. USA

