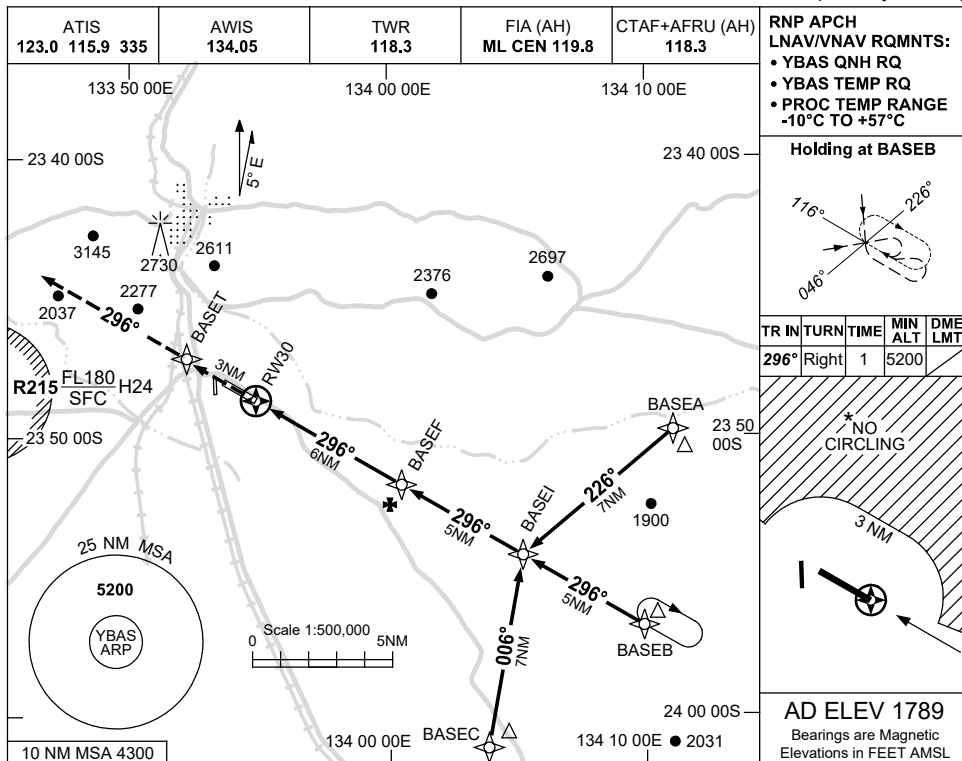


USE QNH

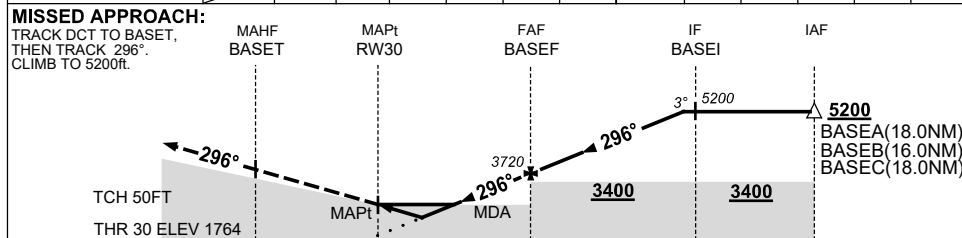
RNP Z RWY 30

ALICE SPRINGS, NT (YBAS)

13 JUN 2024



NM TO NEXT WPT	RW30	0.9	1.4	2	3	4	5	BASEF	1	2	3	4	4.6
ALT (3° APCH PATH)		2090	2260	2450	2770	3090	3410	3720	4040	4360	4680	5000	5200



NM TO RW30 3 0 6 11

NOTES

CATEGORY	A	B	C	D
LNAV/VNAV		2090 (326-1.8)		
LNAV		2260 (496-2.8)		
CIRCLING *	2570 (781-2.4)	2990 (1201-4.0)	2990 (1201-5.0)	
ALTERNATE	(1281-4.4)	(1701-6.0)	(1701-7.0)	

* 1. NO CIRCLING NORTH OF RWY 12/30 BEYOND 3NM.
* 2. CTA CONTAINMENT NOT ASSURED WHEN HOLDING AT OR BLW 6500FT.

Changes: NOTE 2.

BASGN02-179