

**FOR CASA APPROVED OPERATORS ONLY
USE QNH**

OCTAV SIX DEPARTURE

ALICE SPRINGS, NT (YBAS)

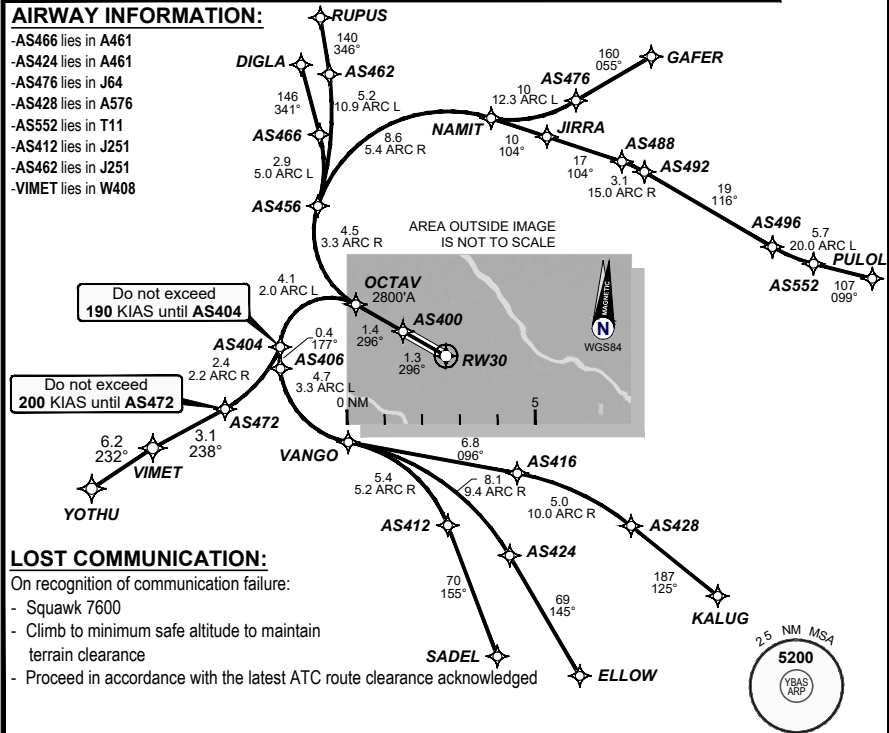
21 MAR 2024

Apt Elev	Trans ALT	ATIS	AWIS	TWR	FIA (AH)	CTAF + AFRU (AH)
1789'	10000'	123.0 115.9 335	134.05	118.3	ML CEN 119.8	118.3

OCTAV SIX RNAV (RNP) DEPARTURE RNP 0.30 (OCTAV6.OCTAV) RWY 30	Minimum climb gradient (All Engines) 11.6% to 2800FT.

TAKE-OFF:
RWY 30: Fly the RNAV (RNP) track to **OCTAV** and cross **OCTAV** at or above **2800'**. Thence:

TRANSITIONS:
(OCTAV6.DIGLA): Fly the RNAV (RNP) track to **DIGLA**.
(OCTAV6.ELLOW): Fly the RNAV (RNP) track to **ELLOW**. Do not exceed **190 KIAS** until **AS404**.
(OCTAV6.GAFER): Fly the RNAV (RNP) track to **GAFER**.
(OCTAV6.KALUG): Fly the RNAV (RNP) track to **KALUG**. Do not exceed **190 KIAS** until **AS404**.
(OCTAV6.PULOL): Fly the RNAV (RNP) track to **PULOL**.
(OCTAV6.SADEL): Fly the RNAV (RNP) track to **SADEL**. Do not exceed **190 KIAS** until **AS404**.
(OCTAV6.RUPUS): Fly the RNAV (RNP) track to **RUPUS**.
(OCTAV6.YOTHU): Fly the RNAV (RNP) track to **YOTHU**. Do not exceed **190 KIAS** until **AS404**.
 Do not exceed **200 KIAS** until **AS472**.



DO NOT USE FOR NAVIGATION

