

**STANDARD INSTRUMENT DEPARTURES (SID)
RWY 12/30 WEST (RNAV)
ALICE SPRINGS, NT (YBAS)**

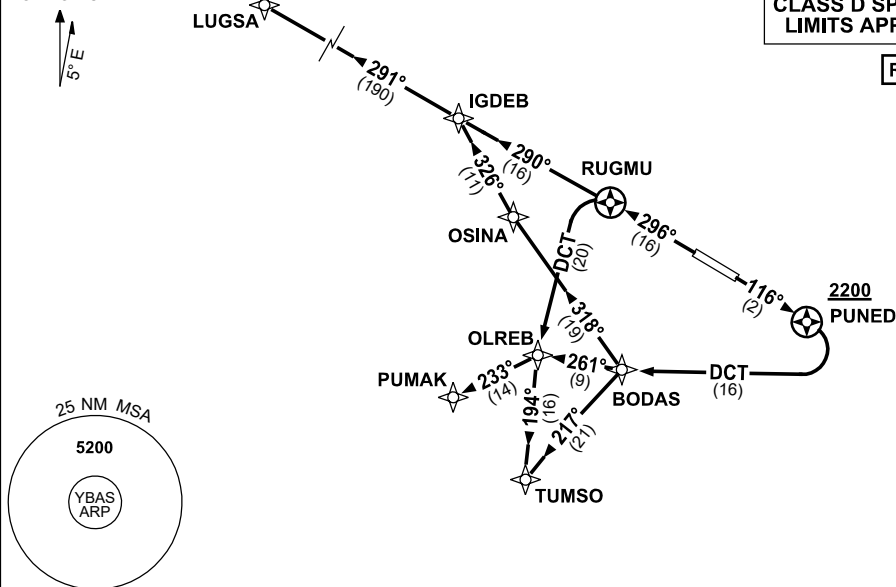
30 NOV 2023

ATIS 123.0 115.9 335	AWIS 134.05	TWR 118.3	FIA (AH) ML CEN 119.8	CTAF+AFRU (AH) 118.3	Bearings are Magnetic Elevations in FEET AMSL
-------------------------	----------------	--------------	--------------------------	-------------------------	--

NOT TO SCALE

**CLASS D SPEED
LIMITS APPLY**

RNP 1



10 NM MSA 4300

TUMSO ONE DEPARTURE
PUMAK ONE DEPARTURE
LUGSA ONE DEPARTURE

RWY 30

GRAD 3.9% TO 3300ft thence 3.3%

- Track 296° to RUGMU

FROM RUGMU

For LUGSA

- Track 290° to IGDEB
- Track 291° to LUGSA, thence as cleared

For PUMAK

- Turn LEFT, track DCT to OLREB
- Turn RIGHT, track 233° to PUMAK, thence as cleared

For TUMSO

- Turn LEFT, track DCT to OLREB,
- Track 194° to TUMSO, thence as cleared

RWY 12

GRAD 3.3%

- Track 116° to PUNED

Cross PUNED AT or ABV 2200FT

- Turn RIGHT, track DCT to BODAS

FROM BODAS

For TUMSO

- Turn LEFT, track 217° to TUMSO thence as cleared

For PUMAK

- Track 261° to OLREB
- Turn LEFT, track 233° to PUMAK, thence as cleared

For LUGSA

- Turn RIGHT, track 318° to OSINA
- Turn RIGHT, track 326° to IGDEB,
- Turn LEFT, track 291° to LUGSA, thence as cleared

Changes: LUGSA REPLACES LEESA, Editorial.

BASDP03-177