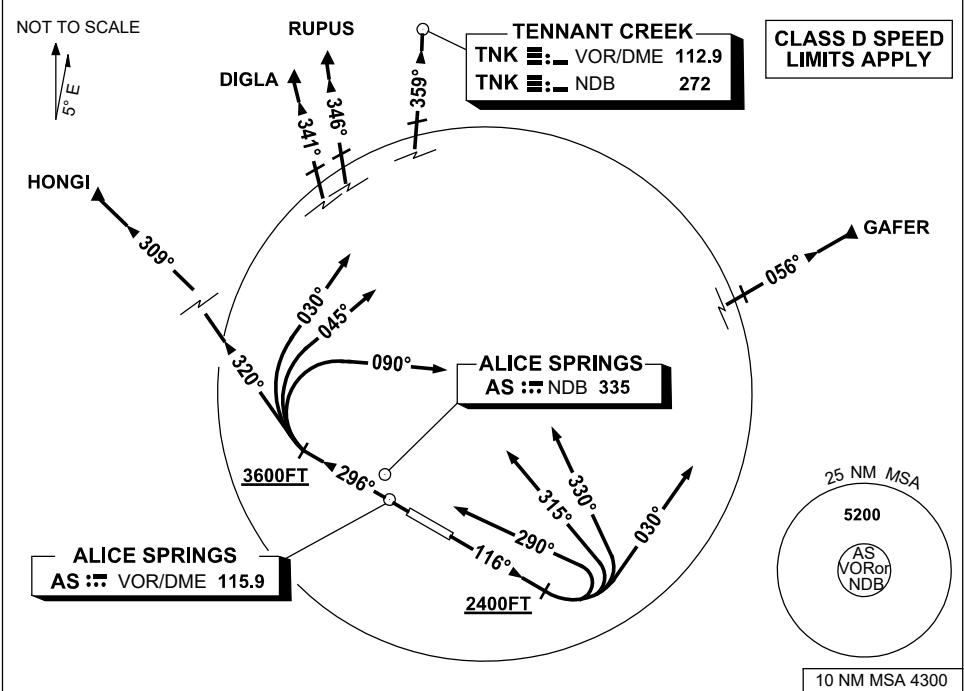


**STANDARD INSTRUMENT DEPARTURES (SID)  
RWY 12/30 NORTH  
ALICE SPRINGS, NT (YBAS)**

**30 NOV 2023**

ATIS 123.0 115.9 335	AWIS 134.05	TWR 118.3	FIA (AH) ML CEN 119.8	CTAF+AFRU (AH) 118.3	Bearings are Magnetic Elevations in FEET AMSL
-------------------------	----------------	--------------	--------------------------	-------------------------	--



<p><b>DIGLA</b> <b>RUPUS</b> <b>TENNANT CREEK (TNK)</b> THREE DEPARTURE</p> <p><b>THREE DEPARTURE</b> <b>ONE DEPARTURE</b> <b>THREE DEPARTURE</b></p> <p><b>RWY 30</b> GRAD 3.8% TO 3600ft THENCE 3.3%</p> <ul style="list-style-type: none"> <li>Track 296°</li> <li>At or ABV 3600ft but not before abeam AS VOR or AS NDB turn RIGHT</li> </ul> <p>For HONGI</p> <ul style="list-style-type: none"> <li>Track 320°</li> <li>Intercept cleared route</li> </ul> <p>For DIGLA and RUPUS</p> <ul style="list-style-type: none"> <li>Track 030°</li> <li>Intercept cleared route</li> </ul> <p>For TNK</p> <ul style="list-style-type: none"> <li>Track 045°</li> <li>Intercept cleared route</li> </ul> <p>For GAFER</p> <ul style="list-style-type: none"> <li>Track 090°</li> <li>Intercept cleared route</li> </ul>	<p><b>GAFER</b> THREE DEPARTURE <b>HONGI</b> THREE DEPARTURE</p> <p><b>RWY 12</b> GRAD 3.3%</p> <ul style="list-style-type: none"> <li>Track 116°</li> <li>At or ABV 2400ft turn LEFT</li> </ul> <p>For HONGI</p> <ul style="list-style-type: none"> <li>Track 290°</li> <li>Intercept cleared route</li> </ul> <p>For DIGLA and RUPUS</p> <ul style="list-style-type: none"> <li>Track 315°</li> <li>Intercept cleared route</li> </ul> <p>For TNK</p> <ul style="list-style-type: none"> <li>Track 330°</li> <li>Intercept cleared route</li> </ul> <p>For GAFER</p> <ul style="list-style-type: none"> <li>Track 030°</li> <li>Intercept cleared route</li> </ul>
--	--

Changes: RUPUS REPLACES SCOTI, Editorial.

BASDP01-177