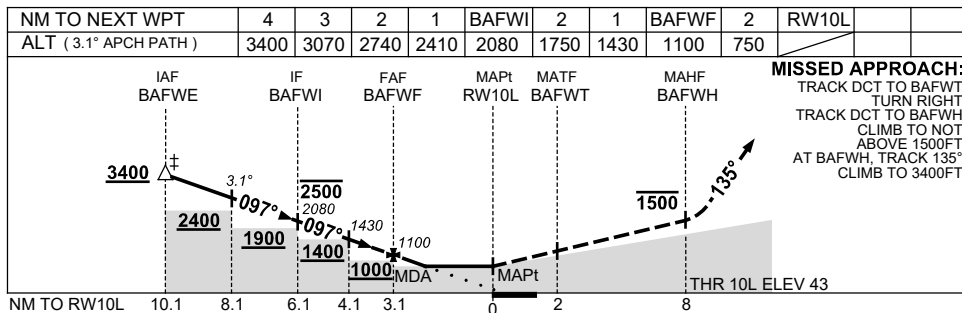
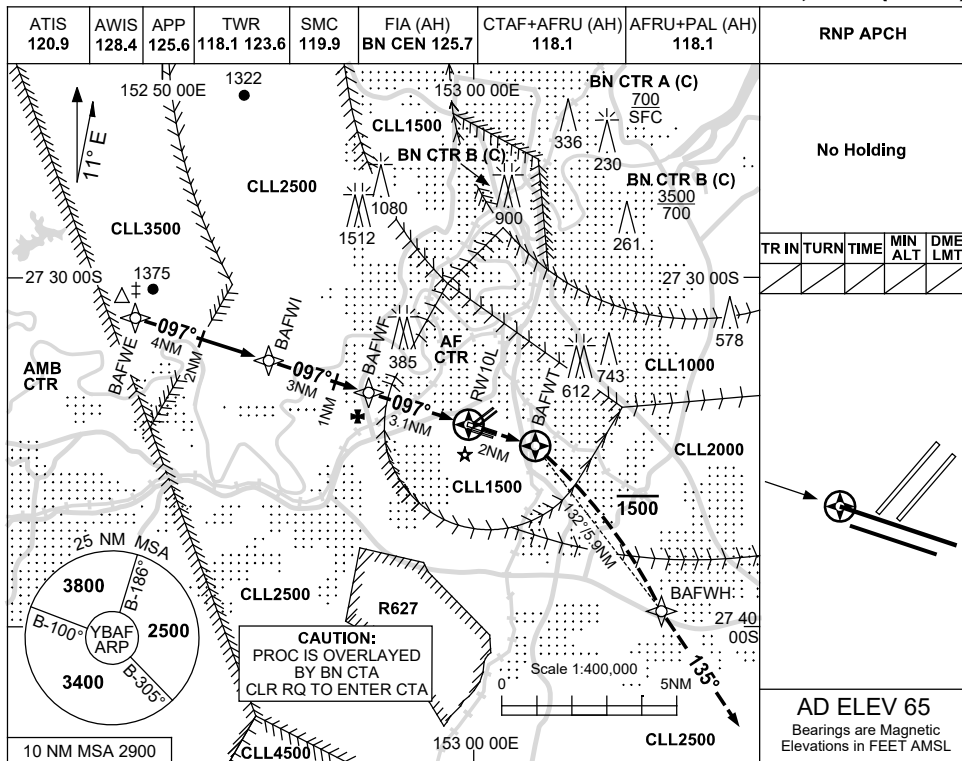


USE QNH RNP Y RWY 10L
BRISBANE/ARCHERFIELD, QLD (YBAF)

24 MAR 2022



CATEGORY	A	B	C	D	#1. ATC CLR RQ FOR PROC. 2. PROC NOT FULLY CONTAINED IN CONTROLLED AIRSPACE. 3. MAX IAS: MAP TURN 210KTS.	
LNAV	NOT APPLICABLE			750 (707-4.0)		NOT APPLICABLE
CIRCLING				1240 (1175-4.0)		
ALTERNATE				(1675-6.0)		

Changes: PROC ALTITUDES.

BAFGN03-170