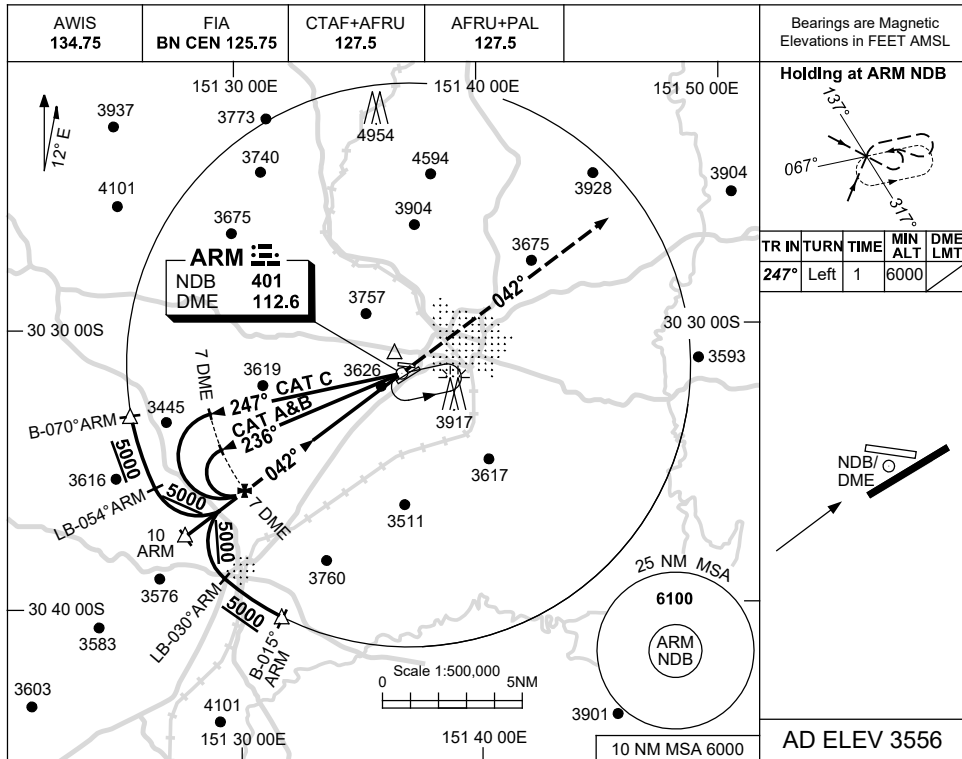


USE QNH

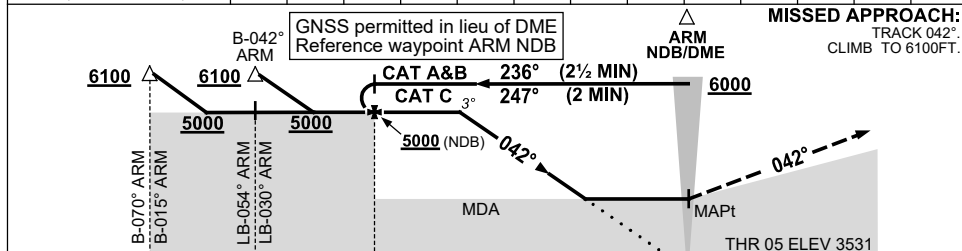
NDB RWY 05

ARMIDALE, NSW (YARM)

17 JUN 2021



DIST TO ARM DME	4.9	4	3	2.3										
ALT (3° APCH PATH)	5000	4710	4390	4160										



NM TO ARM DME

NOTES

CATEGORY	A	B	C	D
S-I NDB		4210 (679-3.9)		NOT APPLICABLE
S-I NDB/DME		4160 (629-3.6)		
CIRCLING	4340 (784-2.4)		4440 (884-4.0)	
ALTERNATE	(1284-4.4)		(1384-6.0)	

1. MAX IAS:  
INITIAL : 210KLT.

Changes: COORD FMT, Editorial.

ARMNB01-167