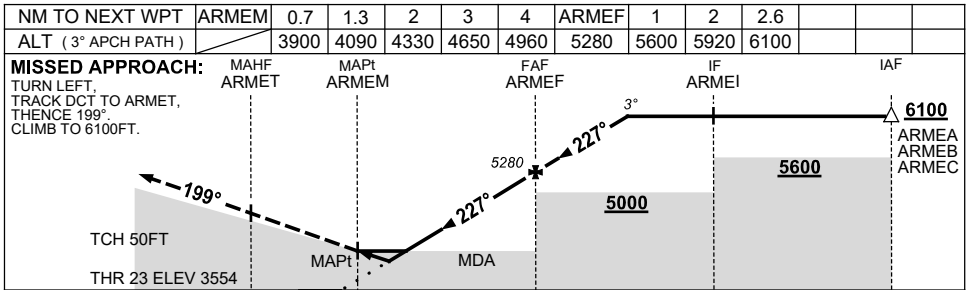
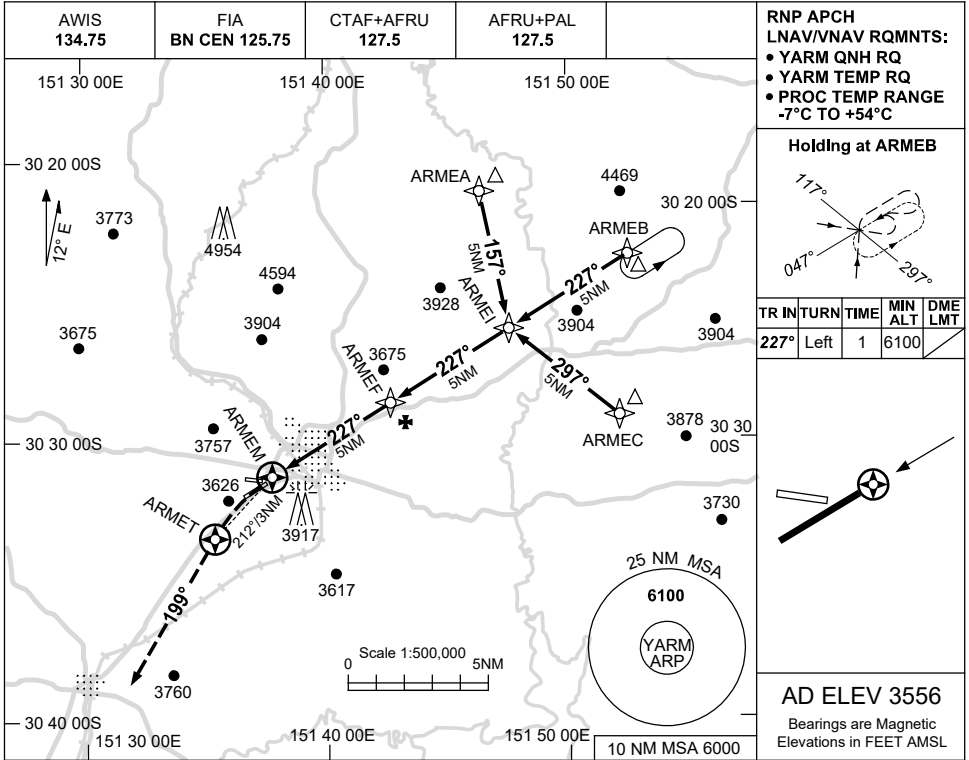


USE QNH

RNP RWY 23

24 MAR 2022

ARMIDALE, NSW (YARM)



NOTES

- 1. MAX IAS: INITIAL : 210KT.

CATEGORY	A	B	C	D	
LNAV/VNAV	3900 (346-1.9)			NOT APPLICABLE	
LNAV	4090 (534-3.0)				
CIRCLING	4340 (784-2.4)		4440 (884-4.0)		
ALTERNATE	(1284-4.4)		(1384-6.0)		

Changes: ARMEB WPT IDENT CORRECTION IN PROFILE VIEW.

ARMGN01-170