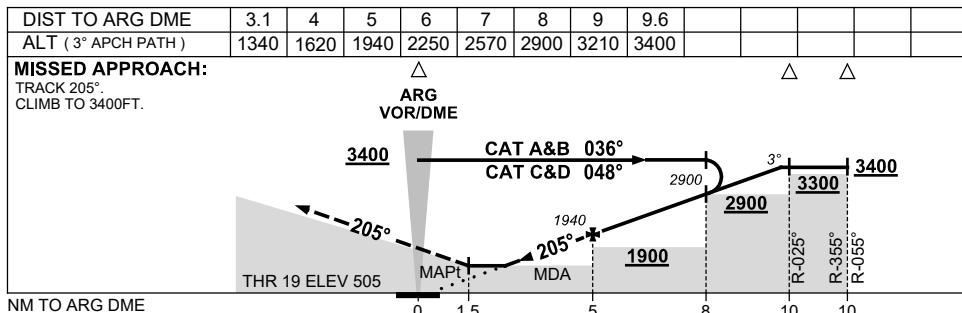
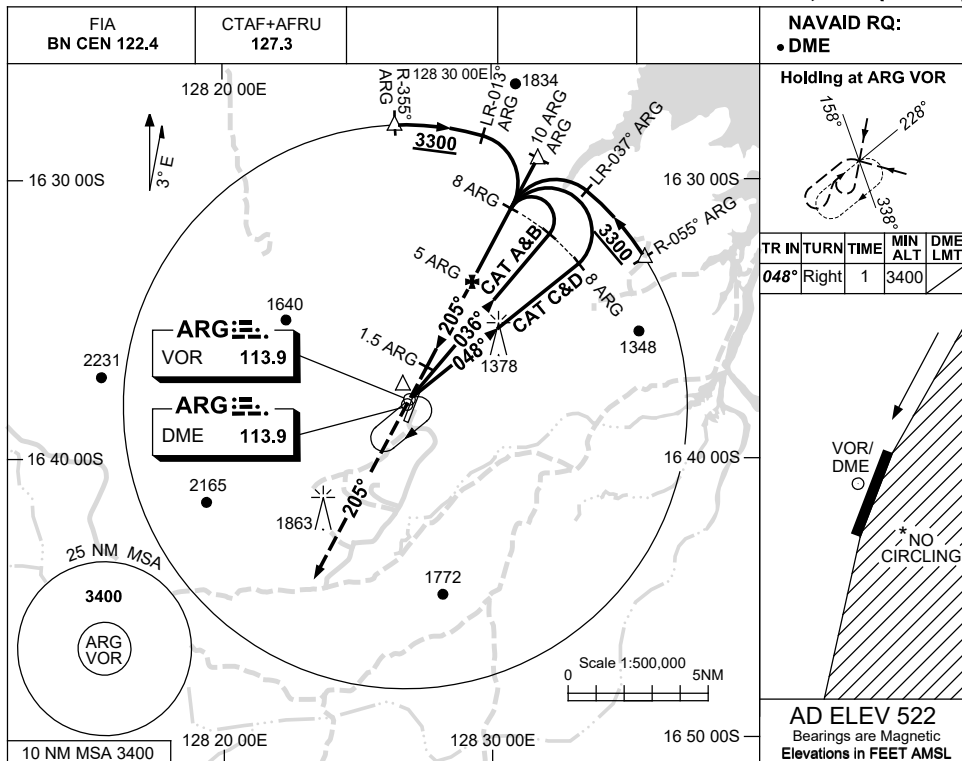


USE QNH

VOR RWY 19  
**ARGYLE, WA (YARG)**

15 AUG 2019



**NOTES**

CATEGORY	A	B	C	D
S-I VOR/DME	<b>1340 (835-4.8)</b>			
CIRCLING*	<b>1340 (818-2.4)</b>	<b>1990(1468-4.0)</b>	<b>2360(1838-5.0)</b>	
ALTERNATE	(1318-4.4)	(1968-6.0)	(2338-7.0)	

1. MAX IAS:  
INITIAL : 210KT.
- \* 2. NO CIRCLING EAST OF RWY 01/19.
3. AWIS (PHONE)  
08 6216 2601

Changes: NOTE 3, COORD FORMAT, Editorial.

ARGV001-160