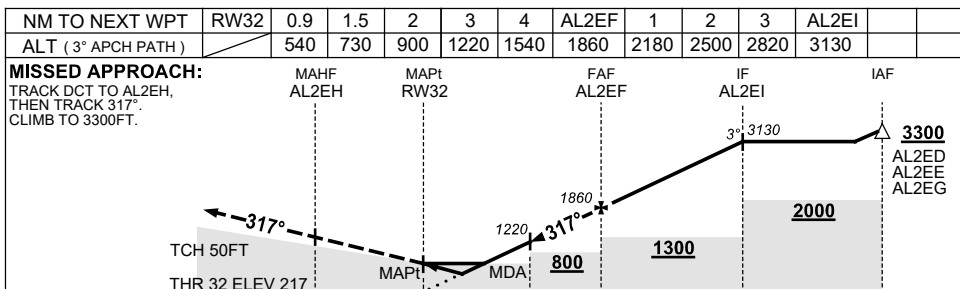
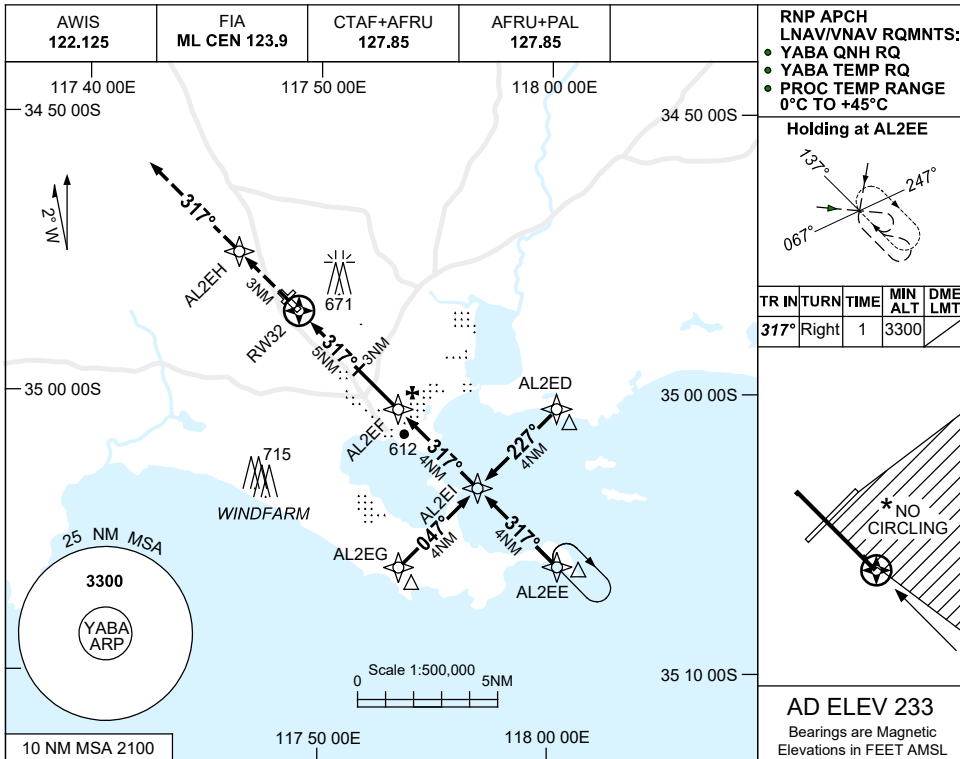


USE QNH

RNP RWY 32  
**ALBANY, WA (YABA)**

7 SEP 2023



**NOTES**

1. MAX IAS:  
 HOLDING: 210KT.  
 INITIAL : 210KT.
- \*2. NO CIRCLING IN SECTOR EAST OF RWY 14/32 & SOUTH OF RWY 05/23.
3. COLOUR: SEE SPEC NOTICES.

CATEGORY	A	B	C	D
LNAV/VNAV	540 (323-1.8)			
LNAV	730 (513-2.9)			
CIRCLING *	1120 (887-2.4)	1170 (937-4.0)	1290 (1057-5.0)	
ALTERNATE	(1387-4.4)		(1437-6.0)	(1557-7.0)

Changes: CHART TITLE, PBN SPECIFICATION BOX, Editorial.

ABAGN02-176