

# ATFM Daily Plan - Monday 20 May 2024

ADP Version 2



Airport	Planned GDPs	Total Arr/Dep	Affected Flights	Total Ground Delay	Av. Ground Delay	36 Hr Synoptic Forecast
YSSY	YSSY GDP-A 2000-0200	911	133	3,079	23.20	
YMML	YMML GDP-A 2000-0400	666	112	3,345	30.00	
YBBN	NONE	625	n/a	0	0.00	
YPPH-A	YPPH GDP-A 0030-1300	490	149	1,638	11.00	
YPPH-D	YPPH GDP-D 2130-0030		105	875	8.30	
<b>Totals</b>		<b>2692</b>	<b>499</b>	<b>8,937</b>	<b>17.28</b>	

\* denotes a revision has taken place

### ATFM Daily Plan Summary Notes

YSSY	Early staffing restrictions with possible compressions with delay up to ERSA in the evening peak due weather.
YMML	Poor weather in the morning & heavily compressed GDP. Risk of oversubscription at 0800.
YBBN	RWY 19R ILS on test as per NOTAM. Nil other significant operational risks identified at this stage.
YPPH	GDP-D & GDP-A in effect due demand. Nil other significant operational risks identified at this stage.
Other Significant	Refer NOTAM for latest estimated airborne traffic delay advice.
Change Summary:	[08:58pm] Version 1: Initial. [06:47am] Version 2: am update

<p><b>Teleconference Details</b>                      1800 062 923                      Participant Code 7207 9651                      Guest Code 3064#</p> <p>NCC: 1800 020 626                      atfmu@airservicesaustralia.com</p>	<p><b>CAP THREAT: 192115 - 200015 &amp; 200730 - 200900</b></p>	<p><b>PRM: NOT REQ</b></p>
	<p><b>YMEN SLOT SCHEME: NO</b></p>	

### Issues expected to impact service delivery

Location	Issue/NOTAM Details
YSSY	C1631/24 RWY 07/25 CLSD EXC WITH 40MIN PN FM 05 191000 TO 05 231300 DAILY 1000-1300
YSSY	C1585/24 RWY 07/25 CLOSED DUE WIP FM 05 192100 TO 05 240700 DAILY 2100-0700
YMML	C546/24 RWY 09/27 CLSD DUE WIP 05 220000 TO 05 220600

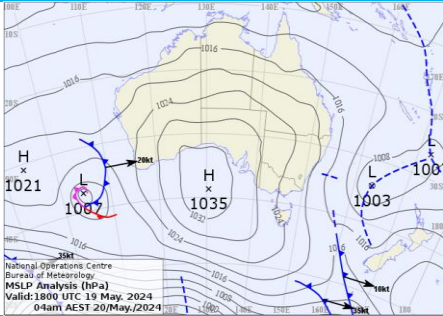
# Network Weather Overview

From now to +72 hours

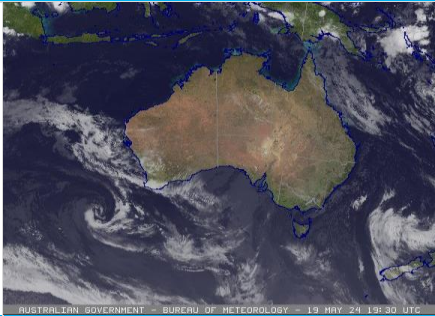
## Monday 20 May 2024

### Weather Overview

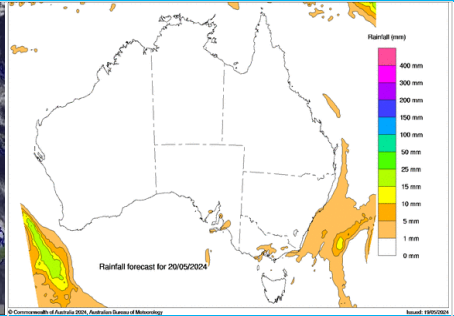
Mean Sea Level Pressure



Satellite Picture



Rainfall Outlook for today



### Weather impact risk assessment Major Airports

	Brisbane	Melbourne	Perth	Sydney
<b>AM Monday</b>	CAVOK. Light SSW winds.	Drizzle, tending to showers from mid-morning. Cloud 0500-1000ft, lifting 1500-2000ft by late morning. Light to moderate SW winds.	CAVOK. Light to moderate NE winds. N to NE winds aloft 20-30 knots.	CAVOK, patchy 3000ft cloud developing. Showers well offshore. Moderate SW winds. 20-30kt SSW winds aloft – headwinds on RWY 16 approach.
<b>PM Monday</b>	CAVOK. Light S winds, shifting ESE early afternoon, then SSW again in the evening.	Light showers, tending to drizzle late evening. Cloud 2000-2500ft, lowering 1500-2000ft in the evening. Light to moderate S to SW winds.	CAVOK. Moderate N to NE winds, possibly varying NNW at times in the late afternoon.	Passing showers, becoming more likely in the evening. Cloud 3000-5000ft, lowering 2500-4000ft during the afternoon. Moderate S to SW winds, gusty at times. 20-30kt S winds aloft – headwinds on RWY 16.
<b>AM Tuesday</b>	CAVOK. Light SSW winds. 20-25kt SSE winds aloft.	Drizzly showers. Light SW winds. Cloud 1500-2000ft lifting to 2000-2500ft late morning.	CAVOK. Light to moderate NE winds.	Passing showers offshore. 2500ft cloud. Moderate SW winds with 20-25kt S winds aloft.
<b>PM Tuesday</b>	CAVOK with showers offshore. Moderate SSE winds, 20-25kt SE winds aloft.	Light showers. Cloud 2500-3000ft. Moderate S winds.	CAVOK. Light and variable winds tending SE later.	Passing showers offshore. 3000ft cloud. Moderate S to SW winds with 20-25kt S winds aloft.
<b>AM Wednesday</b>	A little cloud above 3000ft. Light SSW winds turning moderate SE late morning. Showers offshore.	2500-3000ft cloud. Light NW winds turning SW mid-morning.	CAVOK. Light NE winds.	CAVOK. Light showers offshore. Light to moderate SW winds.
<b>PM Wednesday</b>	Cloud above 3000ft. Moderate SSE winds. Light showers offshore.	3000ft cloud. Light to moderate S to SW winds.	CAVOK. Light NE to SE winds.	CAVOK. Moderate S winds. Light showers offshore.

### Significant other phenomena potentially affecting Australian FIRs

Volcanic Ash (VA) ≥ FL200	For the latest advisories refer to <a href="http://www.bom.gov.au/aviation/volcanic-ash/darwin-va-advisory.shtml">http://www.bom.gov.au/aviation/volcanic-ash/darwin-va-advisory.shtml</a>
Space Weather	For the latest advisories refer to <a href="http://www.bom.gov.au/aviation/space-weather-advisories/">http://www.bom.gov.au/aviation/space-weather-advisories/</a>
Tropical Cyclones	Nil current. For the latest information refer to <a href="http://www.bom.gov.au/cyclone/">http://www.bom.gov.au/cyclone/</a>

Weather risk assessment provided by NCC Meteorological Unit – Bureau of Meteorology  
Contact NCCMET for further detail or advice

Phone: 02 6268 4448  
Email: [nccmet@bom.gov.au](mailto:nccmet@bom.gov.au)

Detailed advice from major Airport MET CDM products available at Airservices NOC Portal, <https://www.airservicesaustralia.com/noc/>

# SYDNEY - YSSY GDP-A 2000-0200

Monday 20 May 2024

## ATFM-CDM Notes

**METCDM Notes:**

[1] 2000-0659: A large high in the Bight and a low in the Tasman Sea drive a fresh S'ly flow over the Sydney Basin. Mostly CAVOK at the airport, with some patchy cloud ~3000ft offshore at first, increasing in coverage from mid-morning. Showers offshore. Light to moderate WSW winds turning SSW and freshening late morning. Winds aloft SSW 25-30 knots, with an x-factor applied for headwinds on RWY 16.

[2] 0700-1259: The gradient flow turns more southerly later in the day, increasing the chance of isolated showers over the airport and lowering cloud to ~2500ft. The risk of showers increases later in the evening, coupled with the persistent 25-30 knot headwinds aloft and hence, the x-factoring increases to compensate. Moderate to fresh SSW winds ease slightly and tend more SW by curfew.

**NCC DLM Notes:**

[Nil DLM Notes]

**SM Notes:**

[1] 2000-0559: TCU staffing (XFactor Reason: Staffing)

## GDP Notes

Early staffing restrictions with possible compressions with delay up to ERSA in the evening peak due weather.

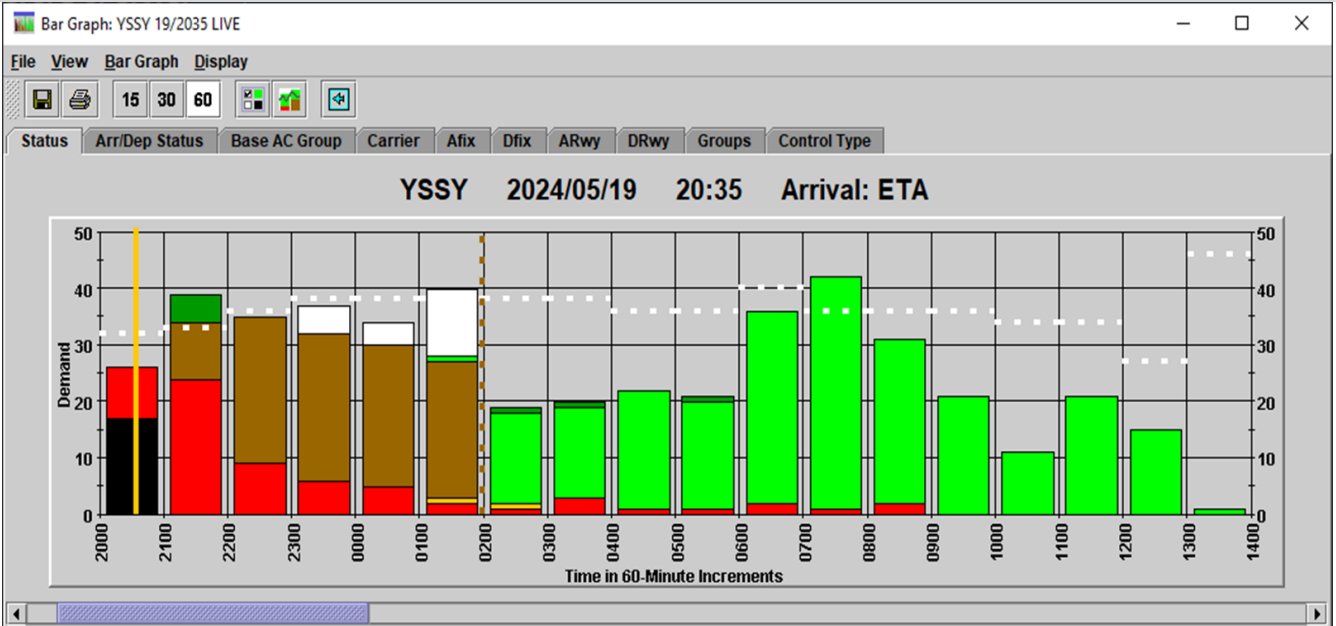
## Tabulated Data

Time (Hour UTC)	192000	192100	192200	192300	200000	200100	200200	200300	200400	200500	200600	200700	200800	200900	201000	201100	201200	0
Runway Mode	16 FEW30	16 FEW30	16 FEW30	16 FEW30	16 DVAA	16 DVAA	16 DVAA	16 DVAA	16 DVAA	16 DVAA	16 DVAA	16 DVAB	16 DVAB	16 DVAB	16 DVAB	16 DVAB	16 DVAB	
Rate	32	33	36	38	38	38	38	38	36	36	40	36	36	36	34	34	27	

## Segmentation and Notes

METCDM Notes	1	1	1	1	1	1	1	1	1	1	1	2	2	2	2	2	2	0
Segmentation	1	1	1	1	1	1	1	1	2	2	2	2	2	2	2	2	2	

## Bar Graph



# MELBOURNE - YMML GDP-A 2000-0400

Monday 20 May 2024

## ATFM-CDM Notes

**METCDM Notes:**

[1] 2000-0659: A large high in the Bight directs a moist southerly flow over the Melbourne Basin throughout Monday. Drizzle periods at first, tending to light showers from mid-morning and becoming less likely towards late afternoon. Cloud 500-1000ft, slowly lifting during the morning to be ~2000ft by early afternoon. X-factors have been applied to show a gradual improvement in conditions through the morning and to cover brief visibility and cloud base reductions in showers during the afternoon. Light WSW winds gradually shift SSW by late morning.  
 [2] 0700-1359: Isolated light showers around the TMA, tending to drizzle in the late evening. Cloud 2000-2500ft, lowering to ~1500ft in the evening. An x-factor has been applied from 12Z, with visibility and cloud base reductions due to drizzle becoming more likely from this time. Moderate S winds ease and tend SW in the evening.

**NCC DLM Notes:**

[Nil DLM Notes]

**SM Notes:**

[Nil SMTM Notes]

## GDP Notes

Poor weather in the morning & heavily compressed GDP. Risk of oversubscription at 0800.

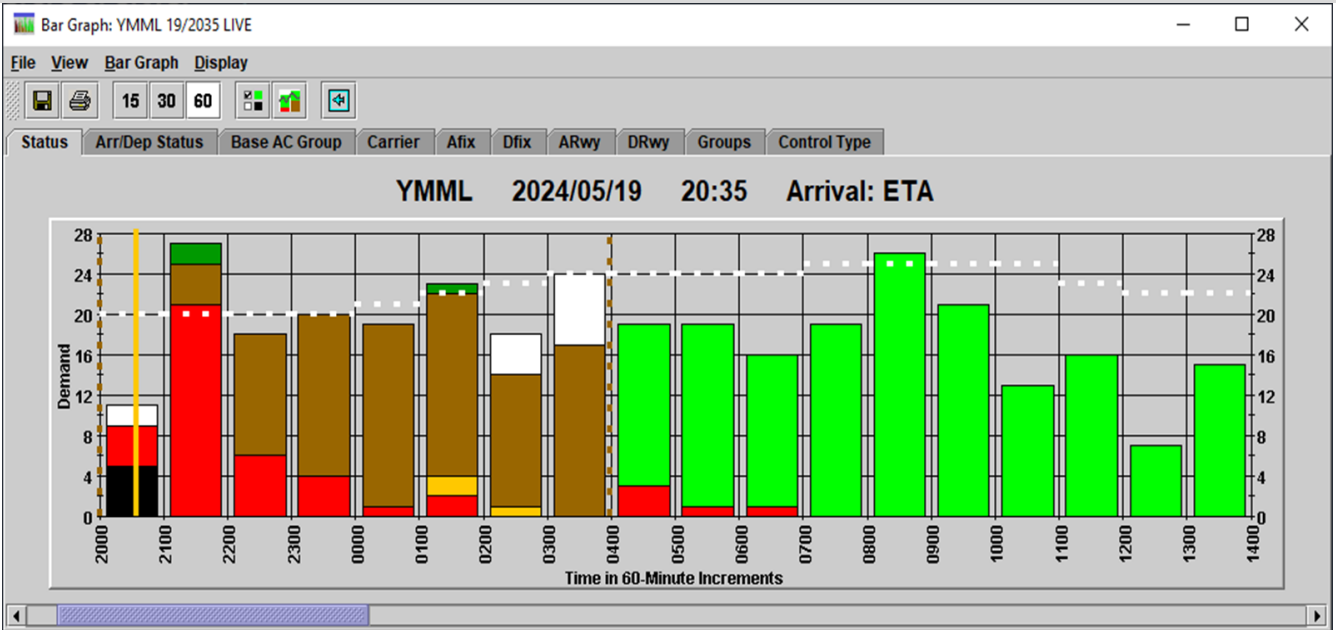
### Tabulated Data

Time (Hour UTC)	192000	192100	192200	192300	200000	200100	200200	200300	200400	200500	200600	200700	200800	200900	201000	201100	201200	201300
Runway Mode	16/27 IMCB	16/27 IMCB	16/27 IMCB	16/27 IMCB	16/27 IMCA	16/27 IMCA	16/27 IMCA	16/27 VMCB	16/27 VMCB	16/27 VMCB	16/27 VMCB	16/27 VMCB	16/27 VMCB	16/27 VMCB	16/27 VMCB	16/27 IMCA	16/27 IMCA	16/27 IMCA
Rate	20	20	20	20	21	22	23	24	24	24	24	25	25	25	25	23	22	22

### Segmentation and Notes

METCDM Notes	1	1	1	1	1	1	1	1	1	1	1	2	2	2	2	2	2	2
Segmentation	1	1	1	1	1	1	1	1	2	2	2	2	2	2	2	2	2	2

### Bar Graph



# BRISBANE - Nil GDP

Monday 20 May 2024

## ATFM-CDM Notes

**METCDM Notes:**

[1] 2000-1259: A large high in the Bight extends a ridge over SE Queensland, maintaining clear and dry conditions over Brisbane. CAVOK. Light SSW winds shift ESE early afternoon, before gradually shifting back to SSW by late evening. A period of RWY 01 operations has been suggested during the afternoon, however winds are expected to be light enough that maintaining RWY 19 operations may be possible right through the day.

**NCC DLM Notes:**

[Nil DLM Notes]

**SM Notes:**

[1] 2300-0659: RWY 19R ILS OFM (NOTAM C0572/24) limiting DEP RWY operations (XFactor Reason: Airport Infrastructure)

## GDP Notes

RWY 19R ILS on test as per NOTAM. Nil other significant operational risks identified at this stage.

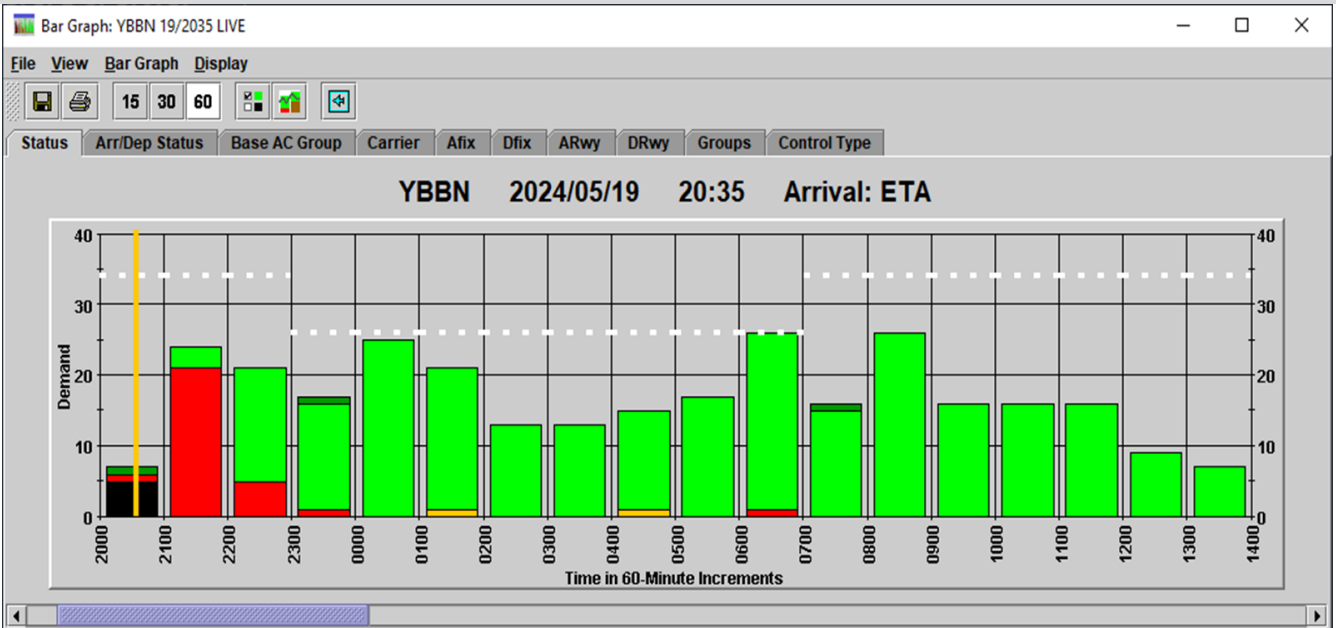
## Tabulated Data

Time (Hour UTC)	192000	192100	192200	192300	200000	200100	200200	200300	200400	200500	200600	200700	200800	200900	201000	201100	201200
Runway Mode	19 VMC	19 VMC	19 VMC	19 VMC	19 VMC	19 VMC	19 VMC	01 VMC	01 VMC	01 VMC	01 VMC	01 VMC	19 VMC	19 VMC	19 VMC	19 VMC	19 VMC
Rate	34	34	34	26	26	26	26	26	26	26	26	34	34	34	34	34	34

## Segmentation and Notes

METCDM Notes	1	1	1	1	1	1	1	1	1	1	1	1	1	1	1	1	1	0
Segmentation	1	1	1	1	1	1	1	1	2	2	2	2	2	2	2	2	2	

## Bar Graph



ATFM-CDM Notes

METCDM Notes:

[1] 2200-1359: A large high in the Bight maintains a dry NE flow over Perth. CAVOK. Light to moderate NE winds may tend NNW to NNE for a period in the late afternoon, although a RWY change is unlikely to be necessary. Winds aloft N to NE 20-30 knots in the morning, easing below 20 knots by early afternoon.

NCC DLM Notes:

[Nil DLM Notes]

SM Notes:

[Nil SMTM Notes]

GDP Notes

GDP-D & GDP-A in effect due demand. Nil other significant operational risks identified at this stage.

Tabulated Data

Time (Hour UTC)	192100	192200	192300	200000	200100	200200	200300	200400	200500	200600	200700	200800	200900	201000	201100	201200	201300
Runway Mode		03/06 VMC	03/06 VMC	03/06 VMC	03/06 VMC	03/06 VMC	03/06 VMC	03/06 VMC	03/06 VMC	03/06 VMC	03/06 VMC	03/06 VMC	03/06 VMC	03/06 VMC	03/06 VMC	03/06 VMC	03/06 VMC
Rate-Arrs		24	24	24	24	24	24	24	24	24	24	24	24	24	24	24	24
Rate-Depts	40	40	40	40													
Segmentation and Notes																	
METCDM Notes		1	1	1	1	1	1	1	1	1	1	1	1	1	1	1	1
Segmentation		1	1	1	1	1	1	2	2	2	2	2	2	2	2	2	2

Bar Graph

