

ATFM Daily Plan - Monday 13 May 2024

ADP Version 3



Airport	Planned GDPs	Total Arr/Dep	Affected Flights	Total Ground Delay	Av. Ground Delay	36 Hr Synoptic Forecast
YSSY	YSSY GDP-A 2000-0300	891	134	4,022	30.00	<p>30.5 1016 1016 1024 1024 1030 1016 1013 1016 1008 1000 1006 1016 1013 1016 180</p> <p>105 1016 1024 1024 1030 1016 1013 1016 1008 1000 1006 1016 1013 1016 180</p> <p>National Meteorological and Oceanographic Centre MEL, Fremantle (MFA) Source: 00 UTC Mon, 13 May 2024 Valid: 00 UTC Tue, 14 May 2024 (10AM EST, 11AM EDT) www.bom.gov.au The Bureau of Meteorology</p>
YMML	YMML GDP-A 2000-0100	676	57	848	15.00	
YBBN	NONE	618	n/a	0	0.00	
YPPH-A	YPPH GDP-A 0030-0600	481	80	1,199	15.00	
YPPH-D	YPPH GDP-D 2130-0030		102	851	8.30	
Totals		2666	373	6,920	16.54	

* denotes a revision has taken place

ATFM Daily Plan Summary Notes

YSSY	<p>Nil significant risks identified at this time.</p> <p>Midday Update: BRIEF DETAIL YSSY: Cloud 2000-3000ft, lifting above 3000ft by late afternoon. Showers clearing in the afternoon. Gusty SSW head winds easing late afternoon. ATC ADVICE: 521 (269A/252D) movements remaining. Nil issues expected.</p>
YMML	<p>Nil significant risks identified at this time.</p> <p>Midday Update: BRIEF DETAIL YMML: Light showers and cloud 2500-3000ft developing late afternoon, lowering to 1500-2000ft during the evening. Light W then SW winds. ATC ADVICE: 416 (217A/199D) movements remaining. Nil issues expected.</p>
YBBN	<p>ILS Runway 19L outage as per NOTAM, nil other significant network risks identified at this time.</p> <p>Midday Update: BRIEF DETAIL YBBN: CAVOK. Light W to SW winds. Chance of an afternoon sea breeze. ATC ADVICE: 357 (203A/154D) movements remaining. Nil issues expected.</p>
YPPH	<p>Risk of crosswinds during morning peak, nil other significant network risks identified at this time.</p> <p>Midday Update: BRIEF DETAIL YPPH: Likely CAVOK. Mostly ENE winds. ATC ADVICE: 322 (203A/119D) movements remaining. Nil issues expected.</p>
Other Significant	Refer NOTAM for latest estimated airborne traffic delay advice.
Change Summary:	<p>[07:34pm] Version 1: Initial.</p> <p>[07:06am] Version 2: am update</p> <p>[12:05pm] Version 3: midday update</p>

<p>Teleconference Details 1800 062 923 Participant Code 7207 9651 Guest Code 3064#</p> <p>NCC: 1800 020 626 atfmu@airservicesaustralia.com</p>	<p>CAP THREAT: 122145 - 122359 & 130730 - 130929</p>	<p>PRM: NOT REQ</p>
	<p>YMEN SLOT SCHEME: NO</p>	

Issues expected to impact service delivery

Location	Issue/NOTAM Details
YSSY	C1453/24 RWY 0725 CLSD DUE WIP FM 05 121000 TO 05 161300 DAILY 1000-1300
YSSY	C1558/24 RWY 07/25 CLSD DUE WIP FM 05 122100 TO 05 170700 DAILY 2100-0700
YMML	C546/24 RWY 09/27 CLSD DUE WIP 05 150000 TO 05 150600
YBBN	C552/24 ILS 'IBS' 110.1 RWY 19L ON TEST, DO NOT USE FM 05 122200 TO 05 140600 DAILY 2200-0600

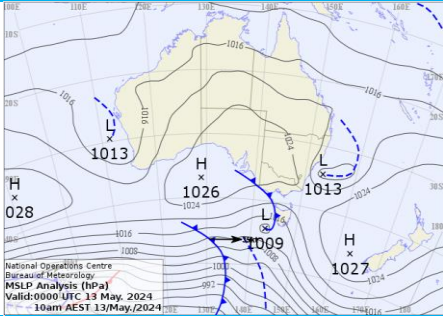
Network Weather Overview

From now to +72 hours

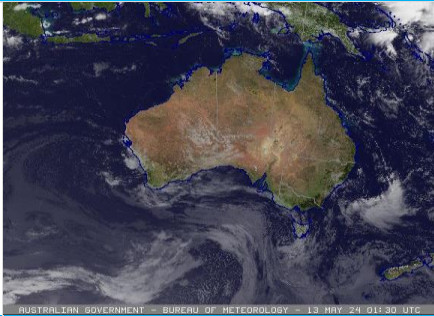
Monday 13 May 2024

Weather Overview

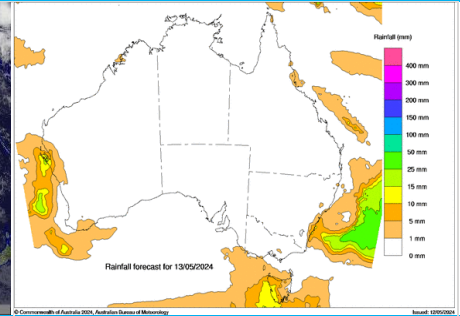
Mean Sea Level Pressure



Satellite Picture



Rainfall Outlook for today



Weather impact risk assessment Major Airports

	Brisbane	Melbourne	Perth	Sydney
PM Monday	CAVOK. Light W to SW winds. Chance of an afternoon sea breeze.	Light showers developing late afternoon. Cloud 2500-3000ft developing late afternoon and lowering to 1500-2000ft during the evening. Light to moderate SW winds.	CAVOK. Light to moderate NE winds, possibly W to NW late afternoon and then SE in the evening.	Showers clearing. Cloud 2000-3000ft, lifting above 3000ft by late afternoon. Gusty SSW winds, easing late afternoon.
AM Tuesday	Patchy cloud 4000-5000ft. Light SW winds turning SE late morning.	Cloud 2500-3000ft. Light W to SW winds. S to SW winds aloft.	CAVOK. Moderate E winds.	Light showers well offshore. Likely CAVOK at the airport. Light W to NW winds, SW aloft.
PM Tuesday	Patchy cloud 4000-5000ft. Light showers offshore in the evening. Light to moderate ESE to SE winds. S to SE winds aloft.	Cloud 3000-3500ft. Light S to SW winds, becoming variable in the evening.	CAVOK. Light N to NW winds, turning SW during the afternoon and SE in the evening.	Mostly CAVOK, then cloud 2000-2500ft in the evening. Possible light showers late evening. Light to moderate S to SE winds.
AM Wednesday	Light showers offshore, moving ashore from late morning. Cloud 2500-4000ft. Light SW winds, turning S to SE late morning.	Early fog S/E TMA, likely CAVOK at the airport. Light N to NW winds.	CAVOK. Light to moderate ESE winds.	Cloud 2000-3000ft. Chance of light showers. Light W to NW winds.
PM Wednesday	Light showers moving inland, increasing over the sea late evening. Cloud 2500-4000ft, lowering 2000-2500ft late evening. Light to moderate SE winds.	Patchy cloud 2500-3000ft. Light SW to SE winds, becoming NW in the evening.	CAVOK. Light to moderate SE winds., possibly SW late afternoon.	Patchy cloud 2500-3500ft, becoming CAVOK in the evening. Light NW to NE winds.
AM Thursday	Cloud 1500-2500ft. Showers. Light to moderate S to SE winds.	Early fog patches within the TMA, likely CAVOK at the airport. Light N to NW winds.	CAVOK. Moderate E winds.	Light showers offshore. Likely CAVOK at the airport. Light W to NW winds.

Significant other phenomena potentially affecting Australian FIRs

Volcanic Ash (VA) ≥ FL200	Nil current. For the latest information refer to http://www.bom.gov.au/aviation/volcanic-ash/darwin-va-advisory.shtml
Space Weather	The Bureau of Meteorology has observed a recent space weather event that reached Geomagnetic Storm G5 – Extreme planetary conditions at 9:45 am AEST on Saturday 11 May 2024 and Geomagnetic Storm G4 – Severe Australian-region conditions at 7:00 pm AEST on Saturday 11 May 2024. Planetary conditions: Geomagnetic Storm G3 - Strong conditions are possible during the early hours of Monday 13 May 2024 due to the anticipated arrival of further Coronal Mass Ejections (CMEs). Current planetary conditions: Geomagnetic Storm G0 conditions are currently occurring. Current Australian conditions: Geomagnetic Storm G0 conditions are currently occurring. Impacts to aviation include reduced performance of HF radio, particularly at higher frequencies. Intermittent degradation in GNSS performance, primarily across the polar region and near the equator between dusk and midnight. The Bureau is forecasting similar risk of further related events, until 6:00 am AEST on Tuesday, 14 May 2024. For the latest advisories refer to http://www.bom.gov.au/aviation/space-weather-advisories/
Tropical Cyclones	Nil current. For the latest information refer to http://www.bom.gov.au/cyclone/

Weather risk assessment provided by NCC Meteorological Unit – Bureau of Meteorology
Contact NCCMET for further detail or advice

Phone: 02 6268 4448
Email: nccmet@bom.gov.au

Detailed advice from major Airport MET CDM products available at Airservices NOC Portal, <https://www.airservicesaustralia.com/noc/>

SYDNEY - YSSY GDP-A 2000-0300

Monday 13 May 2024

ATFM-CDM Notes

METCDM Notes:

[1] 2000-0459: Slow moving low pressure system just to the east of the TMA is directing strong S'ly flow over the area. Cloud 1500-2500ft lifting during the day whilst, lowering 1000-2000ft in showers. Showers, possibly heavy at times over offshore areas easing. Slight risk of isolated offshore thunderstorms. S to SW winds increasing and becoming gusty during the morning and until mid-afternoon. There is risk of crosswinds if surface winds increase and tends more towards WSW (RWY 07/25 closed due WIP). 25-35 knots S'ly winds aloft. X-factor applied for strong headwinds on RWY 16 approach. There is slight risk of turbulence and wind shear during the initial hours of the METCDM if surface winds drops off further then indicated.
 [2] 0300-1259: Showers contracting eastwards during the afternoon and into the evening. Cloud 2500-3500ft lower in showers. DVA rates indicated due to showers and cloud in the TMA however, with showers contracting offshore and away from approach path higher rates are also possible. Moderate S to SW winds.

NCC DLM Notes:

[Nil DLM Notes]

SM Notes:

[1] 0300-0459: Staffing

GDP Notes

Nil significant risks identified at this time.

Midday Update: BRIEF DETAIL YSSY: Cloud 2000-3000ft, lifting above 3000ft by late afternoon. Showers clearing in the afternoon. Gustly SSW head winds easing late afternoon. ATC ADVICE: 521 (269A/252D) movements remaining. Nil issues expected.

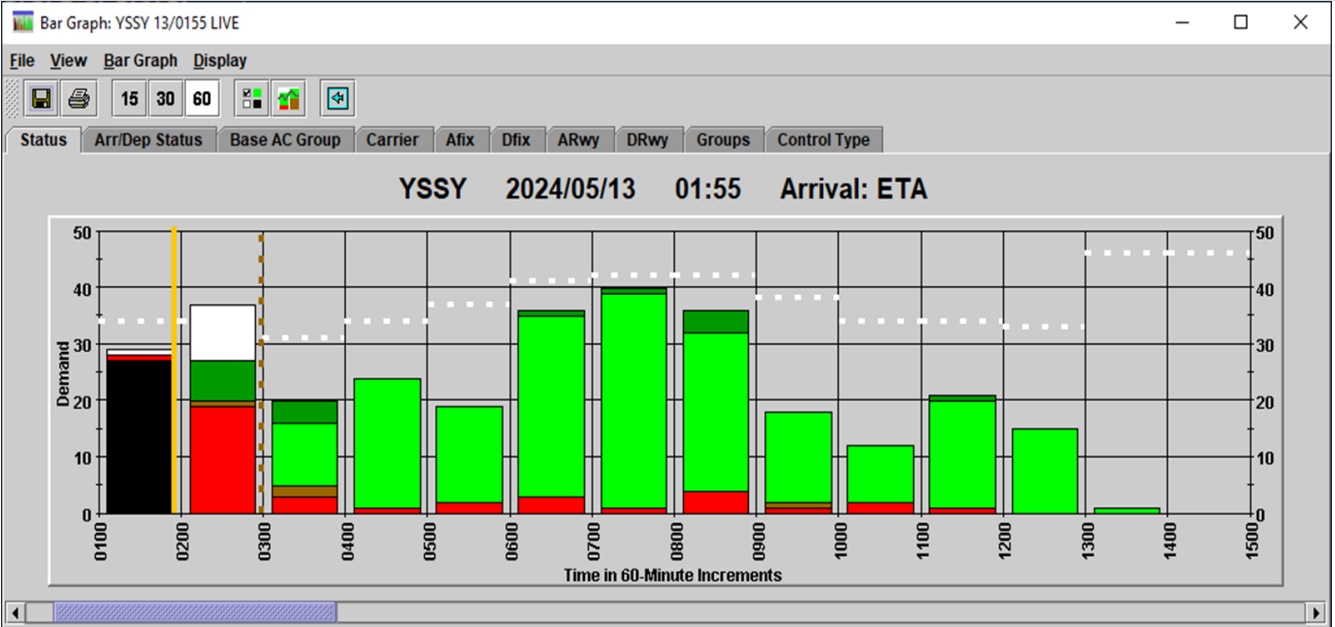
Tabulated Data

Time (Hour UTC)								130200	130300	130400	130500	130600	130700	130800	130900	131000	131100	131200		
Runway Mode								16 ILSA	16 DVAB	16 DVAB	16 DVAB	16 DVAA	16 DVAA	16 DVAA	16 DVAA	16 DVAA	16 DVAA	16 DVAA	16 DVAA	
Rate								34	31	34	37	41	42	42	38	34	34	34	33	

Segmentation and Notes

METCDM Notes	1	1	1	1	1	1	1	1	1&2	1&2	2	2	2	2	2	2	2	2	2	0
Segmentation	1	1	1	1	1	1	1	1	1	2	2	2	2	2	2	2	2	2	2	

Bar Graph



MELBOURNE - YMML GDP-A 2000-0100

Monday 13 May 2024

ATFM-CDM Notes

METCDM Notes:

[1] 2000-0259: N'y flow is expected ahead of an approaching front which is expected to slip far south of the TMA during the afternoon. Light to moderate N to NW winds turning through W and becoming WSW by midday. There is risk of mist/haze and shallow fog in the TMA thus, LAHSO is not indicated whilst, LAHSO is possible before 23Z if risk of mist/haze decreasing. LAHSO is been indicated past 23Z due to higher certainty of RWY 27/34 operations.

[2] 0100-1359: Cloud 2500-4000ft developing and lowering 2000-3000ft during the evening. Light showers in the far SW part of the TMA moving further into the TMA. X-factor applied for risk of showers reducing visibility and cloud ceiling on approach path during the afternoon/evening. Cloud 2500-4000ft developing and lowering 2000-3000ft during the evening. Light to moderate SW winds.

NCC DLM Notes:

[Nil DLM Notes]

SM Notes:

[Nil SMTM Notes]

GDP Notes

Nil significant risks identified at this time.

Midday Update: BRIEF DETAIL YMML: Light showers and cloud 2500-3000ft developing late afternoon, lowering to 1500-2000ft during the evening. Light W then SW winds. ATC ADVICE: 416 (217A/199D) movements remaining. Nil issues expected.

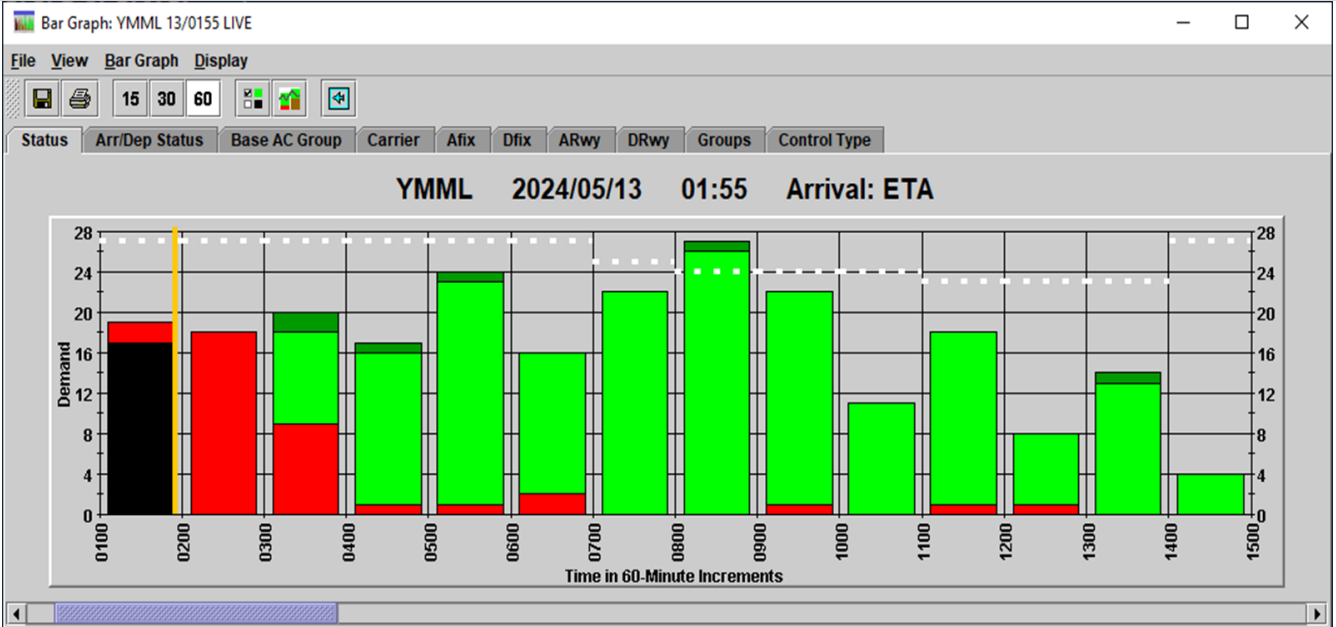
Tabulated Data

Time (Hour UTC)							130200	130300	130400	130500	130600	130700	130800	130900	131000	131100	131200	131300
Runway Mode							16/27 VMCA	16/27 VMCA	16/27 VMCA	16/27 VMCA	16/27 VMCA	16/27 VMCB	16/27 VMCB	16/27 VMCB	16/27 VMCB	16/27 VMCB	16/27 VMCB	16/27 VMCB
Rate							27	27	27	27	27	25	24	24	24	23	23	23

Segmentation and Notes

METCDM Notes	1	1	1	1	1	1&2	1&2	2	2	2	2	2	2	2	2	2	2	2
Segmentation	1	1	1	1	1	1	1	1	2	2	2	2	2	2	2	2	2	2

Bar Graph



BRISBANE - Nil GDP

Monday 13 May 2024

ATFM-CDM Notes

METCDM Notes:

[1] 2000-1259: A weak ridge just to the north of the area is expected to direct dry W to SW flow over the area. Light W to SSW winds possibly becoming moderate during the day. There is slight risk of light NW or NE winds during the afternoon or winds being variable at times. CAVOK conditions expected over the airport. Morning fog in far SW part of the TMA.

NCC DLM Notes:

[Nil DLM Notes]

SM Notes:

[1] 2200-0659: 19L ILS OFM 2200-0600 (NOTAM C0552/24) precluding DEP arrivals

GDP Notes

ILS Runway 19L outage as per NOTAM, nil other significant network risks identified at this time.

Midday Update: BRIEF DETAIL YBBN: CAVOK. Light W to SW winds. Chance of an afternoon sea breeze.
ATC ADVICE: 357 (203A/154D) movements remaining. Nil issues expected.

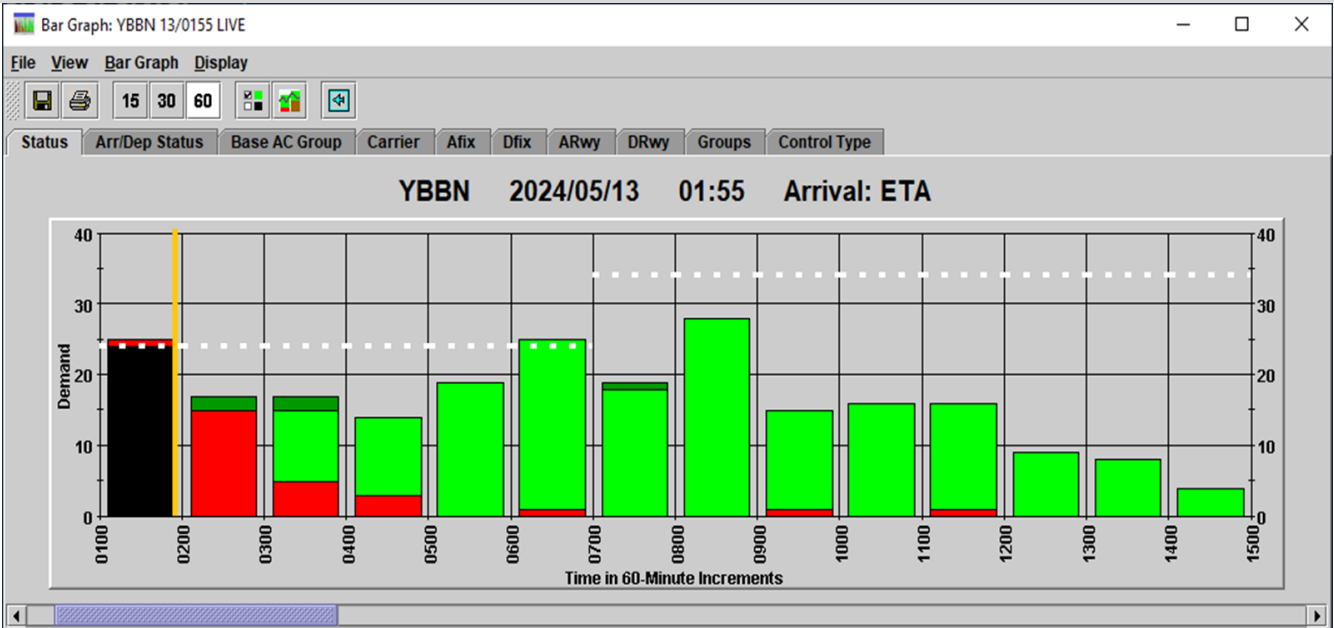
Tabulated Data

Time (Hour UTC)	122000	122100	122200	122300	130000	130100	130200	130300	130400	130500	130600	130700	130800	130900	131000	131100	131200
Runway Mode	19 VMC	19 VMC	19 VMC	19 VMC	19 VMC	19 VMC	19 VMC	19 VMC	19 VMC	19 VMC	19 VMC	19 VMC	19 VMC	19 VMC	19 VMC	19 VMC	19 VMC
Rate	34	34	24	24	24	24	24	24	24	24	24	34	34	34	34	34	34

Segmentation and Notes

METCDM Notes	1	1	1	1	1	1	1	1	1	1	1	1	1	1	1	1	1	0
Segmentation	1	1	1	1	1	1	1	1	2	2	2	2	2	2	2	2	2	

Bar Graph



ATFM-CDM Notes

METCDM Notes:

[1] 2200-0959: High pressure system in the Bight combined with a low pressure system just outside the NW part of the TMA will result in NE gradient flow. Moderate and gusty E'ly winds easing and tending ENE to NE during the afternoon and E to ESE during the evening. 25-30 knots E to NE winds aloft easing 20-25 knots. X-factor applied for risk of crosswinds on RWY 03 and headwinds near threshold. CAVOK. There is risk of afternoon storms outside the far northern part of the TMA which should not impact approaches in the TMA.
[2] 1000-1359: CAVOK conditions. Moderate E to ESE surface winds with aloft E to NE winds increasing to 30 knots during the evening. There is risk of winds tending 110-130 degrees during the evening and favouring operations on RWY 21 only. There is risk of evening storms outside the far northern part of the TMA which should not impact approaches in the TMA.

NCC DLM Notes:

[Nil DLM Notes]

SM Notes:

[Nil SMTM Notes]

GDP Notes

Risk of crosswinds during morning peak, nil other significant network risks identified at this time.

Midday Update: BRIEF DETAIL YPPH: Likely CAVOK. Mostly ENE winds.
ATC ADVICE: 322 (203A/119D) movements remaining. Nil issues expected.

Tabulated Data

Time (Hour UTC)					130200	130300	130400	130500	130600	130700	130800	130900	131000	131100	131200	131300
Runway Mode					03/06 VMC	03/06 VMC	03/06 VMC	03/06 VMC	03/06 VMC	03/06 VMC	03/06 VMC	03/06 VMC	03/06 VMC	03/06 VMC	03/06 VMC	03/06 VMC
Rate-Arrs					24	24	24	24	24	24	24	24	24	24	24	24
Rate-Deps																

Segmentation and Notes

METCDM Notes		1	1	1	1	1	1	1	1	1	1	1	2	2	2	2
Segmentation		1	1	1	1	1	2	2	2	2	2	2	2	2	2	2

Bar Graph

