

# ATFM Daily Plan - Monday 06 May 2024

ADP Version 3



Airport	Planned GDPs	Total Arr/Dep	Affected Flights	Total Ground Delay	Av. Ground Delay	36 Hr Synoptic Forecast
YSSY	YSSY GDP-A 2000-0300	914	99	1,323	13.00	
YMML	YMML GDP-A 2000-0500	689	127	4,094	32.00	
YBBN	NONE	597	n/a	0	0.00	
YPPH-A	NONE	480	n/a	0	0.00	
YPPH-D	YPPH GDP-D 2130-0030		101	775	7.70	
<b>Totals</b>		<b>2680</b>	<b>327</b>	<b>6,192</b>	<b>12.66</b>	

\* denotes a revision has taken place

## ATFM Daily Plan Summary Notes

YSSY	<p>Showers expected to ease from late morning, otherwise no significant operational risks identified.</p> <p>Midday Update: SHRA easing later. Cloudy, with gusty SE winds 25-30kt ATC ADVICE: 534 (276A/258D) movements remaining. GDP until 03z. Demand expected to exceed capacity in the 07z hour with recovery avbl. Nil operational restrictions expected.</p>
YMML	<p>Morning fog and low cloud expected in the TMA.</p> <p>Midday Update: Patchy cloud clearing to CAVOK, light SSE winds. ATC ADVICE: 421 (221A/200D) movements remaining. GDP until 05z. Demand slightly over capacity in the 08z hour but with recovery avbl. Nil issues or changes expected.</p>
YBBN	<p>Morning fog likely in the SW TMA, otherwise no significant risks identified.</p> <p>Midday Update: SSE winds, cloud 3000ft ATC ADVICE: 336 (191A/145D) movements remaining. Nil GDP, nil changes expected. Demand within capacity all day.</p>
YPPH	<p>Morning fog and low cloud expected in the TMA.</p> <p>Midday Update: CAVOK, light winds tending SSW this afternoon. ATC ADVICE: 301 (188A/113D) movements remaining. Nil GDP-AD. 02z hour slightly over capacity but with immediate recovery. All other hours sees demand within capacity.</p>
Other Significant	Refer NOTAM for latest estimated airborne traffic delay advice.
Change Summary:	<p>[06:49pm] Version 1: Initial.</p> <p>[06:37am] Version 2: Morning update</p> <p>[12:11pm] Version 3: Updated notes, weather and graphs</p>

**Teleconference Details**  
 1800 062 923  
 Participant Code 7207 9651  
 Guest Code 3064#  
  
 NCC: 1800 020 626  
[atfmu@airservicesaustralia.com](mailto:atfmu@airservicesaustralia.com)

**CAP THREAT: 052130-060015 & 060730-060930**

**PRM: NOT REQ**

**YMEN SLOT SCHEME: NO**

### Issues expected to impact service delivery

Location	Issue/NOTAM Details
YSSY	C1409/24 RWY 07/25 CLOSED FM 05 052100 TO 05 100700 DAILY 2100-0700
YSSY	C1491/24 RWY 07/25 CLSD FM 05 061000 TO 05 091300 DAILY 1000-1300
YMML	C546/24 RWY 09/27 CLSD DUE WIP FM 05 080000 TO 05 080600

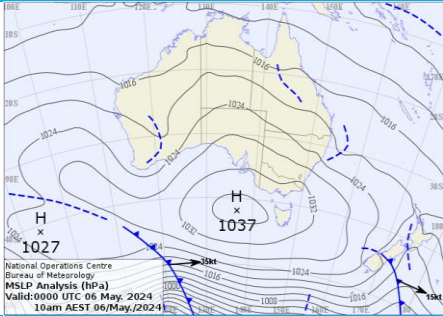
# Network Weather Overview

From now to +72 hours

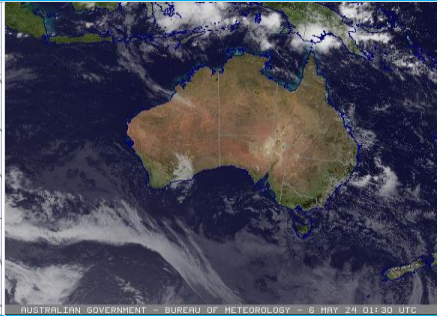
## Monday 06 May 2024

### Weather Overview

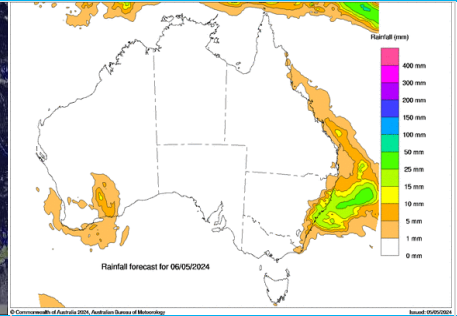
Mean Sea Level Pressure



Satellite Picture



Rainfall Outlook for today



### Weather impact risk assessment Major Airports

	Brisbane	Melbourne	Perth	Sydney
<b>PM Monday</b>	Cloud 2500-3000ft. Light to moderate SE winds.	Patchy 2000ft cloud clearing to CAVOK. Light S to SE winds.	Patchy cloud above 3000ft. Possible light isolated showers offshore. Light to moderate S to SW winds becoming SE during the evening.	Cloud 2500-4000ft. Showers easing. Moderate to fresh S to SE winds, gusty at times in the afternoon.
<b>AM Tuesday</b>	Showers offshore, developing over land from mid-morning. Cloud 2000-2500ft. Moderate S to SE winds, 20-25kt aloft.	Fog and 800-1000ft cloud in the TMA, possible at the airport; fog more likely overnight. Light and variable winds.	CAVOK. Moderate E to SE winds.	Patchy cloud above 3000ft. Light to moderate SE winds. Light showers in the TMA.
<b>PM Tuesday</b>	Showers, easing later. Cloud 2500-3500ft. Moderate to fresh SE winds.	CAVOK. Light S winds.	CAVOK. Moderate SE winds.	Cloud 3000-4000ft. Showers. Moderate SE winds.
<b>AM Wednesday</b>	Cloud 2000-3000ft. Showers offshore moving ashore mid-morning. Light SSW winds tending moderate SE during the morning. SE winds aloft 20 to 30 knots.	Risk of fog or very low cloud early. Light NW winds.	CAVOK. Light to moderate E to NE winds.	Cloud 2000-2500ft. Showers. Light to moderate S to SE winds.
<b>PM Wednesday</b>	Showers easing evening. Moderate SE winds, easing evening. SE winds aloft 20 to 30 knots.	CAVOK. Light and variable winds.	CAVOK. Gusty ENE winds.	Cloud 2000-2500ft. Showers. Moderate S to SE winds.
<b>AM Thursday</b>	Cloud 2000-3000ft. Showers offshore moving ashore mid-morning. Light SSW winds tending moderate SE during the morning. SE winds aloft 20 to 30 knots.	Fog in the TMA, slight chance at the airport. Light and variable winds.	CAVOK. Gusty NE winds, possible turbulence and wind shear with 35-40kt winds aloft.	Cloud 2000-2500ft. Showers. Light to moderate S to SE winds.

### Significant other phenomena potentially affecting Australian FIRs

Volcanic Ash (VA) ≥ FL200	Mt. Ruang (Indonesia): Aviation colour code remains RED for the possibility of a high-level eruption. For the latest information refer to <a href="http://www.bom.gov.au/aviation/volcanic-ash/darwin-va-advisory.shtml">http://www.bom.gov.au/aviation/volcanic-ash/darwin-va-advisory.shtml</a>
Space Weather	For latest advisories refer to <a href="http://www.bom.gov.au/aviation/space-weather-advisories/">http://www.bom.gov.au/aviation/space-weather-advisories/</a>
Tropical Cyclones	Nil significant. For the latest information refer to <a href="http://www.bom.gov.au/cyclone/">http://www.bom.gov.au/cyclone/</a>

Weather risk assessment provided by NCC Meteorological Unit – Bureau of Meteorology  
Contact NCCMET for further detail or advice

Phone: 02 6268 4448  
Email: [nccmet@bom.gov.au](mailto:nccmet@bom.gov.au)

Detailed advice from major Airport MET CDM products available at Airservices NOC Portal, <https://www.airservicesaustralia.com/noc/>

# SYDNEY - YSSY GDP-A 2000-0300

Monday 06 May 2024

## ATFM-CDM Notes

**METCDM Notes:**

[1] 2000-2359: High pressure system west of Tasmania is directing SSE flow over the area. Early morning a weak convergence is expected to develop over the coastal areas and abate during the morning as the aloft winds mixes to the surface. Moderate, gusty at times S to SSE winds increasing during the morning with 25-35 knots SSE winds aloft. Showers with slight chance of storms offshore and over areas to far NE. Cloud 2000-3000ft lower in showers. DVAB rate indicated due to cloud ceiling and higher certainty of visibility being above 5000m. X-factor applied for risk of strong headwind on RWY 16 approach and for risk of visibility/cloud ceiling dropping below DVAB threshold.  
 [2] 2300-1259: Showers in TMA easing. Cloud 2500-4000ft lower in showers. Moderate and gusty SE'ly winds with 25-35 knots SSE winds aloft. X-factor applied for risk of strong headwind on RWY 16 approach.

**NCC DLM Notes:**

[Nil DLM Notes]

**SM Notes:**

[Nil SMTM Notes]

## GDP Notes

Showers expected to ease from late morning, otherwise no significant operational risks identified.

Midday Update: SHRA easing later. Cloudy, with gusty SE winds 25-30kt ATC ADVICE: 534 (276A/258D) movements remaining. GDP until 03z. Demand expected to exceed capacity in the 07z hour with recovery avbl. Nil operational restrictions expected.

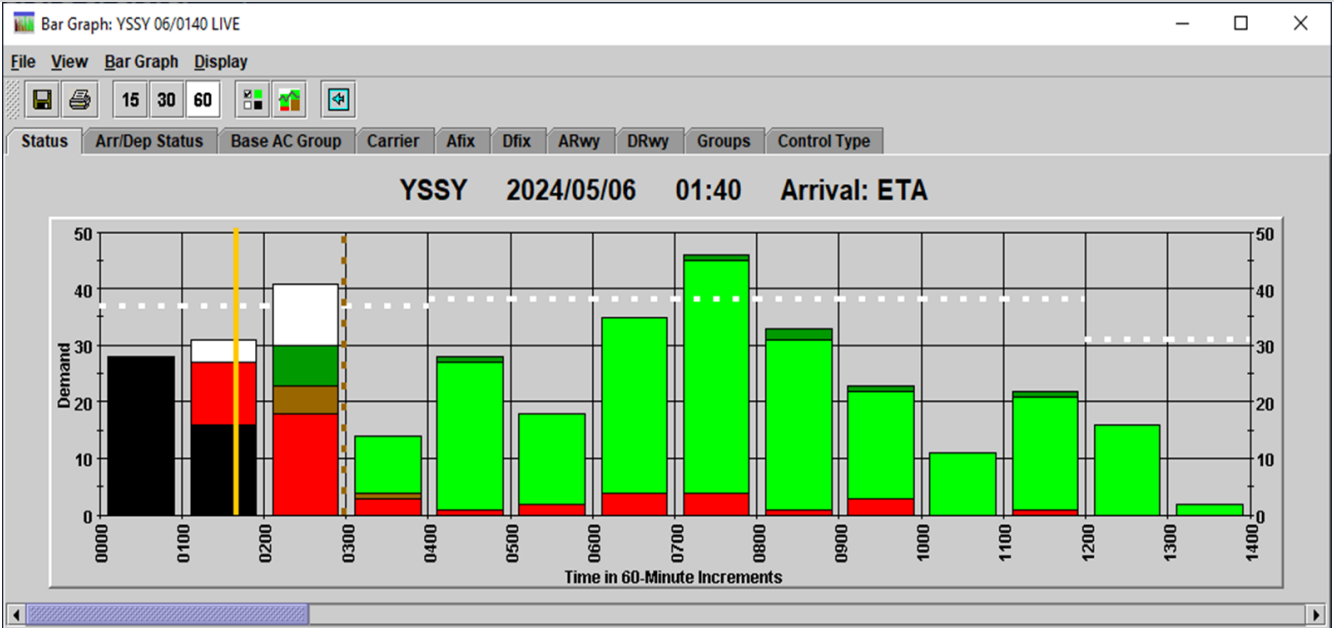
### Tabulated Data

Time (Hour UTC)							060200	060300	060400	060500	060600	060700	060800	060900	061000	061100	061200		
Runway Mode							16 DVAB	16 DVAB	16 DVAB	16 DVAB	16 DVAB	16 DVAB	16 DVAB	16 DVAB	16 DVAB	16 DVAB	16 DVAB	16 DVAB	
Rate							37	37	38	38	38	38	38	38	38	38	38	31	

### Segmentation and Notes

METCDM Notes	1	1	1	1&2	2	2	2	2	2	2	2	2	2	2	2	2	2	2	0
Segmentation	1	1	1	1	1	1	1	1	2	2	2	2	2	2	2	2	2	2	

### Bar Graph



# MELBOURNE - YMML GDP-A 2000-0500

Monday 06 May 2024

## ATFM-CDM Notes

**METCDM Notes:**

[1] 2000-0059: A weak pressure gradient over the area is expected to aid in weak eddy development in the TMA. However, there is uncertainty in positioning and formation of the eddy in the TMA and multiple possible scenarios may eventuate depending on the location of the eddy. First scenario is for a weak eddy developing over the SSE part of the airport and directing light W to SW winds over the airport with fog and low cloud developing over or just to the E and SE of the TMA. The second scenario is for an eddy positioned over E part of the TMA directing light S to SE winds and circulating 0500-1500ft cloud towards the airport with cloud lowering to ground over elevated areas. The third scenario is for the eddy to not develop in the TMA and light S'ly winds in the TMA with fog and low cloud over elevated areas to the east and north of the airport. In all the three scenario's there is risk of fog or low cloud advecting over the airport or on the approach path thus, IMCB rate and x-factors indicated. Operations on RWY 16 proposed given the uncertainty with wind direction early morning.

[2] 2300-1359: Fog and low cloud lifting and clearing in the TMA with surface winds tending S to SSE then S to SSW during the evening. Patchy cloud above 3000ft. Higher rates are possible during the afternoon with RWY 16/27 configurations and slight (< 3knot) tailwind on RWY 27.

**NCC DLM Notes:**

[Nil DLM Notes]

**SM Notes:**

[Nil SMTM Notes]

## GDP Notes

Morning fog and low cloud expected in the TMA.

Midday Update: Patchy cloud clearing to CAVOK, light SSE winds.

ATC ADVICE: 421 (221A/200D) movements remaining. GDP until 05z. Demand slightly over capacity in the 08z hour but with recovery avbl. Nil issues or changes expected.

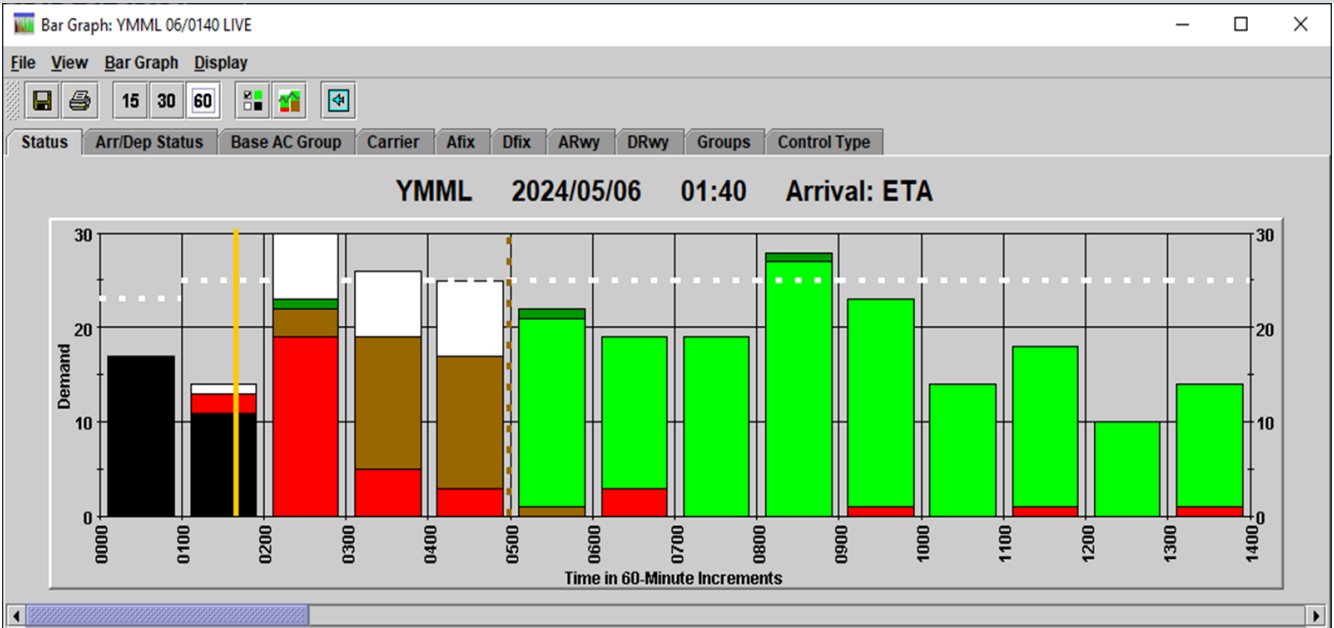
## Tabulated Data

Time (Hour UTC)							060200	060300	060400	060500	060600	060700	060800	060900	061000	061100	061200	061300
Runway Mode							09/16 VMC	09/16 VMC	09/16 VMC	09/16 VMC	09/16 VMC	09/16 VMC	16/27 VMCB	16/27 VMCB	16/27 VMCB	16/27 VMCB	16/27 VMCB	16/27 VMCB
Rate							25	25	25	25	25	25	25	25	25	25	25	25

## Segmentation and Notes

METCDM Notes	1	1	1	1&2	1&2	2	2	2	2	2	2	2	2	2	2	2	2	2
Segmentation	1	1	1	1	1	1	1	1	2	2	2	2	2	2	2	2	2	2

## Bar Graph



# BRISBANE - Nil GDP

# Monday 06 May 2024

## ATFM-CDM Notes

**METCDM Notes:**

[1] 2000-1259: S'y flow over the area with showers mostly offshore possibly moving inland early afternoon then contracting offshore during the evening. Given showers are offshore and isolated on approach path VMC rates have been indicated however, there is a slight risk that showers may move slightly closer and impact approaches during the afternoon. Cloud mostly offshore and above 2500ft developing inland during the afternoon and lowering to 2000ft in areas of showers. Fog is expected over SW part of the TMA and has a low chance of advecting over the airport early morning thus, x-factor applied before 22Z. Light to moderate S to SSW winds becoming S to SSE during the afternoon and SSW during the evening.

**NCC DLM Notes:**

[Nil DLM Notes]

**SM Notes:**

[Nil SMTM Notes]

## GDP Notes

Morning fog likely in the SW TMA, otherwise no significant risks identified.

Midday Update: SSE winds, cloud 3000ft ATC ADVICE: 336 (191A/145D) movements remaining. Nil GDP, nil changes expected. Demand within capacity all day.

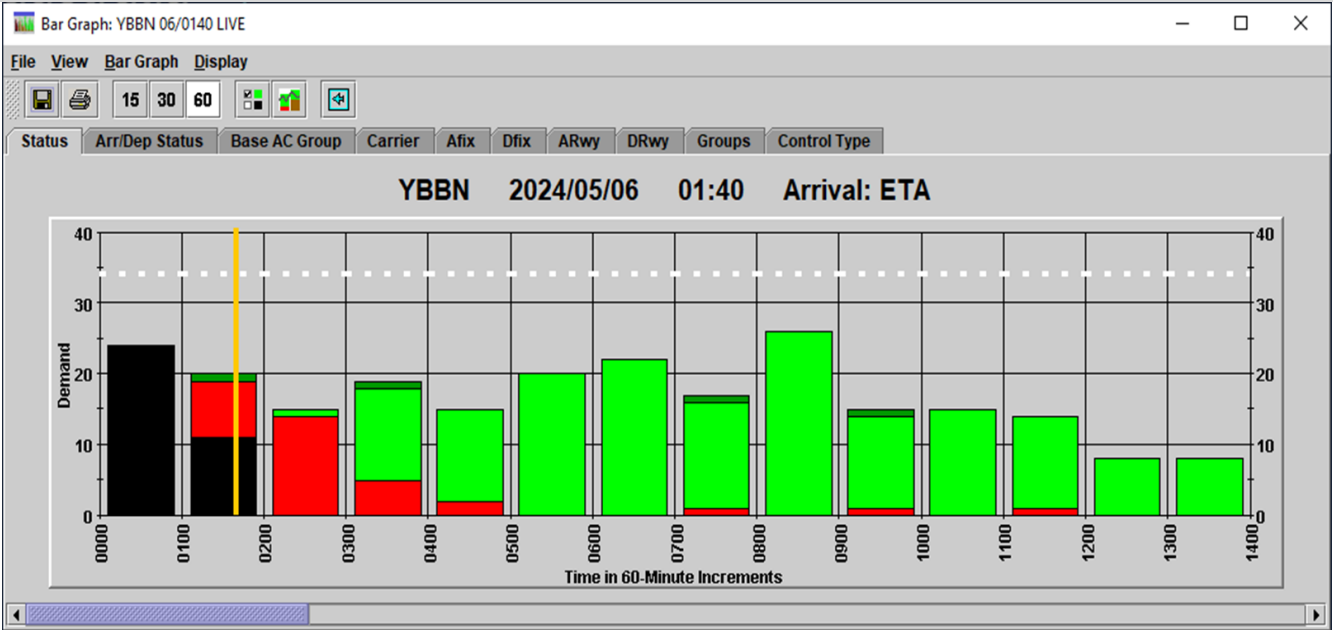
### Tabulated Data

Time (Hour UTC)	052000	052100	052200	052300	060000	060100	060200	060300	060400	060500	060600	060700	060800	060900	061000	061100	061200	
Runway Mode	19 VMC	19 VMC	19 VMC	19 VMC	19 VMC	19 VMC	19 VMC	19 VMC	19 VMC	19 VMC	19 VMC	19 VMC	19 VMC	19 VMC	19 VMC	19 VMC	19 VMC	
Rate	32	32	34	34	34	34	34	34	34	34	34	34	34	34	34	34	34	

### Segmentation and Notes

METCDM Notes	1	1	1	1	1	1	1	1	1	1	1	1	1	1	1	1	1	0
Segmentation	1	1	1	1	1	1	1	1	2	2	2	2	2	2	2	2	2	

### Bar Graph



**ATFM-CDM Notes**

**METCDM Notes:**

[1] 2200-0059: A slow moving cut-off low to the far south of the TMA is anticipated to circulate near surface moisture in the lower levels. Clear sky overnight and light winds at the surface are expected to aid in fog development in the TMA. Fog is expected to be shallow at and around the airport increasing in depth over the southern part of the TMA thus, IMCB rate with x-factor indicated. Fog and low cloud lifting and clearing during the morning. Surface winds are expected to be light and variable as the synoptic SSE to SSW winds are balanced by katabatic NE at the surface.

[2] 0000-1359: Patchy cloud above 3000ft. Light to moderate S to SW winds becoming SE during the evening.

**NCC DLM Notes:**

[Nil DLM Notes]

**SM Notes:**

[Nil SMTM Notes]

**GDP Notes**

Morning fog and low cloud expected in the TMA.

Midday Update: CAVOK, light winds tending SSW this afternoon.

ATC ADVICE: 301 (188A/113D) movements remaining. Nil GDP-AD. 02z hour slightly over capacity but with immediate recovery. All other hours sees demand within capacity.

**Tabulated Data**

Time (Hour UTC)	060100	060200	060300	060400	060500	060600	060700	060800	060900	061000	061100	061200	061300
Runway Mode	21/24 VMC	21/24 VMC	21/24 VMC	21/24 VMC	21/24 VMC	21/24 VMC	21/24 VMC	21/24 VMC	21/24 VMC	21/24 VMC	21/24 VMC	21/24 VMC	21 VMC
Rate-Arrs	26	26	26	26	26	26	26	26	26	26	26	26	24
Rate-Depts													

**Segmentation and Notes**

METCDM Notes	1	1	1&2	2	2	2	2	2	2	2	2	2	2	2	2
Segmentation	1	1	1	1	1	1	2	2	2	2	2	2	2	2	2

**Bar Graph**

